

United States Department of the Interior  
National Park Service**National Register of Historic Places Registration Form**

This form is for use in nominating or requesting determinations for individual properties and districts. See instructions in National Register Bulletin, *How to Complete the National Register of Historic Places Registration Form*. If any item does not apply to the property being documented, enter "N/A" for "not applicable." For functions, architectural classification, materials, and areas of significance, enter only categories and subcategories from the instructions.

**1. Name of Property**Historic name: N/AOther names/site number: Paducah Northside Historic District

Name of related multiple property listing:

N/A

(Enter "N/A" if property is not part of a multiple property listing)

**2. Location**

Street & number: 900 block through 1300 block Park Avenue; 800 block through 1700 block North 10th Street; 900 block through 1700 block North 11th Street; 900 block through 1700 block North 12th Street; 1000 block through 1700 block North 13th Street; 1100 block through 1300 block North 14th Street; 1000 through 1300 block Burnett Street; 1000 block through 1300 block Ellis Street; 1000 block through 1300 block Flournoy Street; 1000 block through 1100 block Greer Street; 1000 block Grover Street; 1000 block through 1200 Olive Street; 1000 block through 1200 block Palm Street; 1200 block Hampton Avenue; 1200 block Salem Avenue; 1000 block through 1100 block Boyd Avenue; 1000 block Gardner Avenue.

City or town: PaducahState: KYCounty: McCrackenNot For Publication: ☒Vicinity: ☐**3. State/Federal Agency Certification**

As the designated authority under the National Historic Preservation Act, as amended,

I hereby certify that this x nomination     request for determination of eligibility meets the documentation standards for registering properties in the National Register of Historic Places and meets the procedural and professional requirements set forth in 36 CFR Part 60.

In my opinion, the property x meets     does not meet the National Register Criteria. I recommend that this property be considered significant at the following level(s) of significance:

    national     statewide    x local

Applicable National Register Criteria:

   x A     B    x C     D

Signature of certifying official/Title:

Date

State or Federal agency/bureau or Tribal Government

Paducah Northside Historic District

Name of Property

McCracken County, KY

County and State

In my opinion, the property \_\_\_ meets \_\_\_ does not meet the National Register criteria.

Signature of commenting official:

Date

Title :

State or Federal agency/bureau  
or Tribal Government

#### 4. National Park Service Certification

I hereby certify that this property is:

- \_\_\_ entered in the National Register  
\_\_\_ determined eligible for the National Register  
\_\_\_ determined not eligible for the National Register  
\_\_\_ removed from the National Register  
\_\_\_ other (explain:)

Signature of the Keeper

Date of Action

#### 5. Classification

##### Ownership of Property

(Check as many boxes as apply.)

Private:

☒

Public – Local

☒

Public – State

☐

Public – Federal

☐

##### Category of Property

(Check only one box.)

Building(s)

☐

District

☒

☐

Paducah Northside Historic District

Name of Property

Site

McCracken County, KY  
County and State

Structure

☐

Object

☐

**Number of Resources within Property**

(Do not include previously listed resources in the count)

Contributing

392

Noncontributing

114

buildings

1

sites

structures

objects

392

115

Total

Number of contributing resources previously listed in the National Register

**6. Function or Use**

**Historic Functions**

(Enter categories from instructions.)

DOMESTIC/single residence

DOMESTIC/secondary structure

COMMERCE/TRADE/specialty store

RELIGION/religious facility

EDUCATION/school

LANDSCAPE/parking lot

**Current Functions**

(Enter categories from instructions.)

DOMESTIC/single residence

DOMESTIC/secondary structure

RELIGION/religious facility

LANDSCAPE/parking lot

Paducah Northside Historic District  
Name of Property

McCracken County, KY  
County and State

## 7. Description

### Architectural Classification

(Enter categories from instructions.)

NO STYLE

LATE 19<sup>TH</sup> AND 20 CENTIURY REVIVALS/Colonial Revival

LATE 19<sup>TH</sup> AND EARLY 20<sup>TH</sup> CENTURY AMERICAN MOVEMENTS/Bungalow/Craftsman

LATE 19<sup>th</sup> AND EARLY 20<sup>TH</sup> CENTURY AMERICAN MOVEMENTS/ American Foursquare

**Materials:** (enter categories from instructions.)

Principal exterior materials of the property:

WOOD

BRICK

STONE

METAL

CONCRETE

ASBESTOS

VINYL

### Narrative Description

(Describe the historic and current physical appearance and condition of the property. Describe contributing and noncontributing resources if applicable. Begin with a **summary paragraph** that briefly describes the general characteristics of the property, such as its location, type, style, method of construction, setting, size, and significant features. Indicate whether the property has historic integrity.)

### Summary Paragraph

The Paducah Northside Historic District (Photos 1-21; Figs. 1-3) is a nearly exclusively residential district of c. 183 acres, located northwest of the central business district of the City of Paducah, the county seat of McCracken County, Kentucky, along the south bank of the Ohio River approximately 250 miles west of the state capitol at Frankfort. The district is also about two blocks (c. 1,400 feet) west of the Ohio River marking the dividing line between Kentucky and Indiana. It is similar to Subtype III, *Early Automobile Suburbs, 1908-1945*, as described in the Multiple Property Submission "Historic Residential Suburbs in the

**Paducah Northside Historic District**

**McCracken County, KY**  
County and State

**Name of Property**

United States 1830-1930," hereafter referred to as "Suburbs MPS."<sup>1</sup> The district is topographically flat and lies principally south of N. 10<sup>th</sup> Street and north of the adjacent Mapelawn Park Cemetery, a substantial burial ground that defines much of the district's southern boundary. The district's few commercial buildings and churches are scattered throughout the nominated area. Still, the balance of the district is nearly exclusively residential and includes domestic architecture and dependencies of varying scales and materials. The district is densely built-up and vacant parcels typically consist of lots throughout the district's interior where buildings were previously located, along with a small number of surface parking lots, most of which are associated with the district's several churches. A total of 507 resources is within the district; of these, 392 are contributing elements and 115 are non-contributing features. Contributing properties are those dating from within the c. 1890-1968 Period of Significance and which retain integrity of location, design, setting, materials, workmanship, feeling, and association. Non-contributing features post-date the Period of Significance or have undergone major alterations that compromise their integrity. Most non-contributing features are automobile garages that appear fewer than fifty years of age, scattered throughout the district. Smaller outbuildings, including pre-fabricated buildings and temporary structures such as metal carports, are treated as uncounted landscape features. The district's noncontributing elements and these uncounted landscape elements fail to detract from the district's otherwise strong sense of time and place; the district as a whole retains both integrity in its composite qualities and the essential appearance that it had at the end of the Period of Significance.

---

**Narrative Description**

This nearly exclusive residential historic district, sited northwest of downtown Paducah, consists of streets and alleys platted from northeast to southwest. Moving from north to south, the district includes portions of the numbered streets of N. 10<sup>th</sup>, N. 11<sup>th</sup>, N. 13<sup>th</sup>, and N. 14<sup>th</sup>. Park Avenue marks the district's southeast boundary and runs from N. 10<sup>th</sup> to N. 14<sup>th</sup> Sts. Moving from southeast to northwest, the following intersect the aforementioned numbered streets: Boyd, Burnett, Flournoy, Northwest, Greer, Hampton, Ellis, Salem, Fern, Olive, and Palm, which defines much of the district's western terminus. Unnamed alleys define the rear lot lines of some streets in the district, while others, such as the block between N. 10<sup>th</sup>, N. 11<sup>th</sup>, Grover, and Northwest Streets were laid out without alleys.

Development within the district is dense. The majority of the parcels are long and narrow, mostly platted in the early decades of the twentieth century, and some exhibiting side yards that may be the result of demolition or may have never been built upon. While side- or front-yard setbacks were not required historically, setbacks are generally uniform, with houses built near to the sidewalk and relatively close to one another side-by-side. The rear sections of lots were typically reserved for gardens and presently contain yards and in some cases detached garages and miscellaneous outbuildings. Side driveways are often present, normally accessing garages. Most streets retain tree lawns and mature trees are found throughout the district. The largest single parcel in the district is the 3.5-acre site of the 1956 Northside

---

<sup>1</sup>Linda Flint McClelland and David L. Ames, "Historic Residential Suburbs in the United States 1830-1930," National Register Multiple Property Submission, reprinted by the Office of Archeology and Historic Preservation, Colorado Historic Preservation Office, Denver, n. d. NRIS Number 64500838.

Paducah Northside Historic District

McCracken County, KY

Name of Property

County and State

School, a school building at 1040 Flournoy Street that, but for its chimney, has been demolished; it is counted as a non-contributing structure within the context of the district.

The district's streets are asphalt-paved, typically with curbs, and sidewalks in varying condition line most streets. The Suburbs MPS notes that in districts such as this, "curbs and gutters, durable pavement, sidewalks, driveways, and garages became desirable features in new neighborhoods."<sup>2</sup> Alleys in the district are typically unpaved, streetlights are mounted on wooden utility poles, and overhead utility wires are prominent.

The built environment of the Paducah Northside Historic District consists chiefly of domestic architecture, typically 1 or 1½ stories in height, generally of wood frame construction, resting on stone, brick, or early concrete block foundations; some foundations are parged. Typical of most neighborhoods, many of the district's wood frame houses have been clad in non-historic material, including aluminum and vinyl siding, along with historic asbestos shingle finishes. However, the original siding is presumed to remain beneath. A small number of brick-finished houses are in the district, with typical exterior surfaces of common-bond brick. The Property Value Administrator (PVA) identified many of these as "brick veneer" although this cannot be confirmed. A minimal number of houses of concrete block are present. Both the gable and hipped roof forms are equally favored throughout the district, including conventional hipped roofs and pyramidal roofs, along with gable-end-oriented roofs, side-gable roofs, and intersecting gable roofs. Hipped and pyramidal roofs are often penetrated by dormers as are the characteristic side-gable roofs on Craftsman-style Bungalows. A small number of gambrel roofs are present on houses suggestive of the Dutch Colonial Revival style. Roofs are finished in asphalt shingles and standing-seam metal. Many houses retain original front and back porches, both hip-roofed and shed-roofed. Some front porches have been enclosed to create additional interior living space. Interior and gable-end exterior chimneys are on most of the district's houses; some penetrate the slopes of hipped roofs and some original chimneys have been removed in the course of re-roofing or as part of the retrofitting of heating systems. Windows throughout the Paducah Northside Historic District are typically flat-topped, often 1/1, set within modest surrounds. In a few limited cases, fenestration patterns have been modified in the course of window replacement or siding changes. However, these changes fail to diminish the district's otherwise high degree of integrity.

As described fully in Section 8, this has always been a working-class neighborhood. The vast majority of the houses in this district are vernacular in character, interpreting that often-misunderstood term as it is defined in Ward Bucher's **Dictionary of Building Preservation**: "a building built without being designed by an architect or someone with similar formal training, often based on traditional or regional forms."<sup>3</sup> The majority of the houses in the district are modestly-scaled and -ornamented front- or side-gable-roofed cottages, among which are interspersed a series of examples of Craftsman style. Some repetitive house types (Photo No. 21 of 21) are evident in the district, suggestive of healthy speculative

---

<sup>2</sup> *Ibid.*, p. F-55.

<sup>3</sup> Ward Bucher, **Dictionary of Building Preservation** (New York: John Wiley and Sons, 1996).

Paducah Northside Historic District

McCracken County, KY

Name of Property

County and State

building during the district's formative years. Specific examples of these styles and house types appear in the Section 8 narrative.

Several churches are found within the district. These are typically of brick construction, gable-roofed, with fenestration of religious art glass of varying complexity. These are discussed more fully in Section 8.

Two schools, Northside School and Whittier School, were once in the district. Northside School was a single-story 1956 brick neighborhood school located on a 3.5-acre tract on Flournoy Street at the corner of N. 11<sup>th</sup> Street. Only its red brick furnace chimney remains, and, as noted above, it is counted as a non-contributing structure (Photo 6 of 21). The 1908 Whittier School was demolished c. 1969 (Fig. 2) and was replaced by the Whittier Apartments, a modern 10-building public housing complex located between North 12<sup>th</sup>, N. 13<sup>th</sup>, Greer, and Northview Streets.

As noted in the introductory paragraph, the Paducah Northside Historic District retains historic and architectural integrity, although the district's architecture is modest in scale and ornamentation. The overall working-class character of the district is intact and represents development in this historically African-American section of Paducah throughout the district's Period of Significance. Alterations to buildings within the historic district include applying non-historic siding and installing replacement windows, and early roofing materials have been replaced with asphalt or modern standing-seam metal. However, with respect to the district as a whole, these alterations are widely dispersed and do not detract significantly from the ability of the nominated area to reflect its appearance throughout the Period of Significance. The extent of alteration of only a few properties has led to their loss of historic architectural integrity and their resulting classification as noncontributing resources. Most noncontributing resources are buildings erected following the district's Period of Significance.

Most non-contributing resources are buildings erected following the Period of Significance of the district and the extent of alteration of only a small number of properties has led to their loss of historic architectural integrity and their resulting classification as noncontributing resources.

The following inventory spreadsheet lists the resources in the district, incorporating resource numbers referring to the district map included with this nomination, an approximate date of construction, and an evaluation as to the contributing or non-contribution character of each. Most properties are designated with an "M," referring to minor or moderate degrees of alteration. Properties that have undergone major alterations (obvious porch removals, major changes in fenestration or rooflines, non-historic additions on principal elevations, and other significant character-altering changes) typically render a property "non-contributing."

Paducah Northside Historic District  
Name of Property

McCracken County, KY  
County and State

MAP NUM- BER	SHPO SUR- VEY NUM- BER	ADDRESS	APPROX. DATE	HGT	MAT	USE	STYLE/ROOF	CHANGES	STA- TUS
1	MCPN-1522	950 Park Ave.	1890	2	BR	COMM	ITAL/FLAT	SF altered	C
1a	1522	950 Park Ave.	1920	1	BR	GAR	FLAT	M	C
2	1542	1007 Park Ave.	1920	1	WF	SF RES	GL	M	C
2a	1542	1007 Park Avenue	1970	1	WF	GAR	FG	M	C
3	1523	1018-1020 Park Ave.	1920	1.5	WF	DUP RES	CRF	M	C
4	1543	1019 Park Avenue	2011	1	WF	RES	MOD		NC
4a	1543	1019 Park Avenue	2011	1	WF	GAR	SHED	M	NC
5	1524	1024 Park Avenue	1922	1	WF	RES	GF	M	C
6	1525	1026 Park Avenue	1897	1.5	WF	RES	GL	M	C
6a	1525	1026 Park Avenue	1970	1	WF	GAR	GF	M	C
7	1526	1030 Park Avenue	1897	1.5	WF	RES	SG	M	C
8	387	1031 Park Avenue	1907	1.5	WF	RES	GF	M	C
9	388	1039 Park Avenue	1907	1.5	BR	RES	GL	M	C
9a	388	1039 Park Avenue	1920	1	WF	GAR	FG	M	C
9b	388	1039 Park Avenue	1990	1	CB	STG	FG	M	NC
10	1527	1040 Park Avenue	1915	1.5	WF	RES	GL	M	C
10a	1527	1040 Park Avenue	1970	1	WF	GAR	FG	M	C
11	389	1045-1049 Park Ave.	1947	1	CB	COMM	N/A	MOD	C
12	1528	1100 Park Avenue	1892	1.5	BR	RES	GF	M	C
13	1529	1104 Park Avenue	1907	1.5	WF	RES	FG	M	C
13a	1529	1104 Park Avenue	1970	1	WF	GAR	FG	M	C
14	1530	1108 Park Avenue	1903	1.5	WF	RES	FG	M	C
14a	1530	1108 Park Avenue	1970	1	CB	GAR	FG	M	C
15	1531	1116 Park Avenue	1907	1.5	WF	RES	CRF	M	C
16	1532	1120 Park Avenue	1907	1.5	BR	RES	GL	M	C
17	1533	1124 Park Avenue	1882	1.5	WF	RES	GL	M	C
18	1927	1128 Park Avenue	1975	1	WF	RES	SG	M	NC
19	1534	1132 Park Avenue	1882	1.5	WF	RES	GF	M (STUCCO)	C
19a	1534	1132 Park Avenue	1920	1	WF	GAR	GF	M (STUCCO)	C
20	390	1135 Park Avenue	1907	1	BR	COMM	ITAL	M	C
21	1535	1200 Park Avenue	1999	1	WF	RES	GF	M	NC
22	391	1203 Park Avenue	1930	1.5	WF	RES	GL	M	C
23	1536	1204 Park Avenue	2000	1	WF	RES	GF	M	NC
24	392	1205 Park Avenue	1920	1	WF	RES	SG	M	C
25	1537	1212 Park Avenue	1997	1	WF	RES	NONE	M	NC
26	1538	1214 Park Avenue	1897	1.5	WF	RES	CRF	M	C
27	393	1215 Park Avenue	1896	1.5	WF	RES	SG	M	C
28	394	1217 Park Avenue	1915	1.5	WF	RES	GF	M	C
28a	394	1217 Park Avenue	1970	1	WF	GAR	GF	M	C
29	1539	1218 Park Avenue	1889	1	WF	RES	GL	M	C
30	395	1239 Park Avenue	1900	1	WF	RES	GL	M (STUCCO)	C
31	1540	1240 Park Avenue	1897	1.5	WF	RES	GF	M	C
32	1552	1247 Park Avenue	1920	1.5	WF	RES	CRF	M (STUCCO)	C
33	1540	1250 Park Avenue	1955	1	CB	COMM	N/A	M	C
34	1553	1301 Park Avenue	1983	1	CB	COMM	N/A	M	NC
34a	1553	1301 Park Avenue	1970	1	CB	GAR	FG	M	C



**Paducah Northside Historic District**

**McCracken County, KY**

**Name of Property**

**County and State**

35	1554	1311 Park Avenue	1910	1.5	WF	RES	GF	M	C
36	1555	1315 Park Avenue	1960	1.5	WF	RES	GF	M	C
37	1555	1317 Park Avenue	1907	1.5	WF	RES	GF	M	C
38	1556	1321 Park Avenue	1906	1	WF	RES	GF	M	C
39	1557	1329 Park Avenue	2013	1	WF	RES	GF	M	NC
40	1928	806 N. 10th Street	1960	1	WF	RES	SG	M	C
40a	1928	806 N. 10th Street	1980	1	WF	STG	SG	M	C
41	1929	826 N. 10th Street	1907	1	WF	RES	GF	M	C
41a	1929	826 N. 10th Street	1970	1	WF	GAR	GF	M	NC
42	1930	836 N. 10th Street	1882	1	WF	RES	SG	M	C
43	1931	838 N. 10th Street	1979	1	WF	RES	IG	M	NC
43a	1931	838 N. 10th Street	1970	1	WF	GAR	FG	M	C
44	1558	839 N. 10th Street	1987	1	METAL	COMM	N/A	N/A	NC
45	1932	912 N. 10th Street	1977	1	WF	RES	SG	M	NC
46	1933	914 N. 10th Street	2020	1	WF	RES	MODULAR	M	NC
47	1559	925 N. 10th Street	1972	1	WF	RES	SG	M	NC
48	1560	929 N. 10th Street	1972	1	WF	RES	SG	M	NC
49	1561	935 N. 10th Street	1892	1	BR	RES	IG	M	C
50	1934	936 N. 10th Street	1949	1	CB	COMM	FLAT	MAJ	NC
51	1562	1003 N. 10th Street	1979	1	WF	RES	IG	M	NC
52	1935	1006 N. 10th Street	1977	1	WF	RES	SG	M	NC
53	1563	1007 N. 10th Street	1988	1	WF	RES	SG	M	NC
54	1564	1009 N. 10th Street	1987	1	WF	RES	SG	M	NC
55	1565	1013 N. 10th Street	1979	1	WF	RES	SG	M	NC
56	1566	1017 N. 10th Street	1979	1	WF	RES	SG	M	NC
57	1567	1021 N. 10th Street	1983	1	WF	RES	SG	M	NC
58	1568	1117 N. 10th Street	2000	1	WF	RES	GF	M	NC
59	1569	1121 N. 10th Street	1990	1	WF	RES	SG	M	NC
60	1570	1201 N. 10th Street	1956	1	CB	COMM	FLAT	M	NC
61	1571	1345 N. 10th Street	1971	1	BV	RES	RANCH	M	C
62	1572	1353 N. 10th Street	1973	1	WF	RES	SG	M	NC
63	1573	1359 N. 10th Street	1973	1	WF	RES	SG	M	NC
64	1574	1367 N. 10th Street	1969	1	BV	RES	SG	MAJ	NC
65	1575	1373 N. 10th Street	1969	1	WF	RES	SG	MAJ	NC
66	1576	1401 N. 10th Street	1926	1.5	BV	RES	SG	M	C
67	1577	1405 N. 10th Street	1945	1	WF	RES	SG	M	C
67a	1577	1405 N. 10th Street	1970	1	WF	GAR	FG	M	C
68	1578	1411 N. 10th Street	1961	1	BV	RES	SG	M	C
69	1579	1443 N. 10th Street	1966	1	WF	RES	SG	M	C
70	1580	1447 N. 10th Street	1966	1	WF	RES	SG	M	C
71	1581	1455 N. 10th Street	1966	1	WF	RES	SG	M	C
72	1582	1457 N. 10th Street	1966	1	WF	RES	SG	M	C
72a	1582	1457 N. 10th Street	1970	1	WF	GAR	SG	M	C
73	1583	1467 N. 10th Street	1952	1	WF	RES	SG	M	C
73a	1583	1467 N. 10th Street	1970	1	WF	GAR	FG	M	NC
74	1584	1473 N. 10th Street	1952	1	WF	RES	SG	M	C
75	1636	1500 N. 10th Street	1952	1	WF	RES	SG	M	C
76	1585	1501 N. 10th Street	1925	1.5	WF	RES	BUNG	M	C
76a	1585	1501 N. 10th Street	1925	1.5	WF	GAR	FG	M	C
77	1635	1502 N. 10th Street	1952	1	WF	RES	SG	M	C
78	1587	1505 N. 10th Street	1925	1	WF	RES	SG	M	C
78a	1587	1505 N. 10th Street	1960	1	WF	GAR	SG	M	C

**Paducah Northside Historic District**

**McCracken County, KY**

**Name of Property**

**County and State**

79	1588	1509 N. 10th Street	1925	1	WF	RES	FG	M	C
79a	1588	1509 N. 10th Street	1970	1	WF	GAR	FG	M	C
80	1634	1510 N. 10th Street	1952	1	WF	RES	SG	M	C
81	1589	1511 N. 10th Street	1923	1.5	WF	RES	FG	M	C
82	1633	1512 N. 10th Street	1952	1	WF	RES	sg	M	C
83	1590	1517 N. 10th Street	1923	1	WF	RES	FG	M	C
83a	1590	1517 N. 10th Street	1930	1	WF	GAR	FG	M	C
84	1632	1518 N. 10th Street	1942	1.5	WF	RES	BUNG	M	C
85	1631	1524 N. 10th Street	1950	1	WF	RES	SG	M	C
86	1630	1528 N. 10th Street	1952	1	WF	RES	SG	M	C
87	1591	1603 N. 10th Street	1932	1.5	WF	RES	FG; CRFT	M	C
88	1629	1604 N. 10th Street	1952	1.5	WF	RES	FG	M	C
89a	1629	1604 N. 10th Street	1952	1	WF	GAR	FG	M	C
90	1593	1607 N. 10th Street	1944	1	BV	RES	SG	M	C
90a	1593	1607 N. 10th Street	1944	1	CB	GAR	HIP	M	C
91	1628	1612 N. 10th Street	1944	1	WF	RES	SG	M	C
91a	1628	1612 N. 10th Street	1944	1	WF	GAR	FG	M	C
92	1627	1616 N. 10th Street	1953	1	BV	RES	IG	M	C
93	1594	1617 N. 10th Street	1925	1.5	WF	RES	BUNG	M	C
94	1595	1619 N. 10th Street	1927	1.5	WF	RES	BUNG	MAJOR	NC
95	1626	1620 N. 10th Street	1953	1	BV	RES	IG	M	C
95a	1626	1620 N. 10th Street	1980	1	WF	GAR	FG	M	C
96	1625	1626 N. 10th Street	1952	1	WF	RES	SG	M	C
96a	1625	1626 N. 10th Street	1960	1	WF	GAR	SG	M	C
97	1624	1632 N. 10th Street	1952	1	WF	RES	SG	M	C
97a	1624	1632 N. 10th Street	1960	1	WF	GAR	SG	M	C
98	1596	1637 N. 10th Street	1924	1.5	WF	RES	BUNG	M	C
99	1597	1639 N. 10th Street	1940	1.5	WF	RES	BUNG	lg. add'n, façade	NC
100	1623	1700 N. 10th Street	1960	1	WF	RES	SG	M	C
100a	1623	1700 N. 10th Street	1960	1	WF	GAR	FG	M	C
101	1598	1701 N. 10th Street	1920	1	WF	RES	FG	M	C
102	1622	1706 N. 10th Street	1913	1	WF	RES	FG	M	C
103	1599	1707 N. 10th Street	1960	1	WF	RES	SG	M	C
104	1621	1708 N. 10th Street	1920	1.5	WF	RES	BUNG	M	C
105	1600	1715 N. 10th Street	1947	1.5	WF	RES	CRFTS	M	C
106	1601	1717 N. 10th Street	1956	1	WF	RES	HIP	M	C
107	1602	1721 N. 10th Street	1950	1	WF	RES	SG	M	C
108	1603	1725-1725½ N. 10th Street	1942	1	WF	DUP RES	FG	M	C
109	1618	1726 N. 10th Street	1951	1	WF	RES	SG	M	C
109a	1618	1726 N. 10th Street	1951	1	WF	GAR	SG	M	C
110	1604	1729 N. 10th Street	1930	1	WF	RES	FG	M	C
111	1936	1732 N. 10th Street	1951	1	WF	RES	SG	M	C
111a	1936	1732 N. 10th Street	1951	1	WF	GAR	FG	M	C
112	1605	1733 N. 10th Street	1922	1.5	BV	RES	SG	MAJOR	NC
113	1648	919-925 N. 11th Street	1986	2	WF	DUP RES	SG	M	NC
114	1649	935-937 N. 11th Street	1986	1	WF	DUP RES	SG	M	NC
115	1650	1017 N. 11th Street	1960	1	WF	RES	SG	M	C
116	1651	1029 N. 11th Street	1980	1	WF	MOB RES	FLAT	M	NC
117	1652	1107 N. 11th Street	1995	1	WF	RES	SG	M	NC
118	1653	1121 N. 11th Street	1962	1	WF	RES	SG	M	C

**Paducah Northside Historic District**

**McCracken County, KY**

**Name of Property**

**County and State**

118a	1653	1121 N. 11th Street	1962	1	WF	GAR	FG	M	C
119	1654	1127 N. 11th Street	1960	1	WF	RES	SG	M	C
120	1655	1133 N. 11th Street	1960	1	WF	RES	SG	M	C
121	1656	1145 N. 11th Street	2000	1	WF	REL	FG	M	NC
122	1657	1167 N. 11th Street	1980	1	WF	RES	SG	M	NC
123	1658	1173 N. 11th Street	1977	1	WF	RES	FG	M	NC
123a	1658	1173 N. 11th Street	1977	1	WF	GAR	FG	M	NC
124	1659	1177 N. 11th Street	1975	1	WF	RES	FG	M	NC
125	1660	1203 N. 11th Street	1995	1	WF	RES	FG; MOD	M	NC
126	1661	1211 N. 11th Street	1978	1	BV	RES	SG	M	NC
		1301-1303 N. 11th Street							
127	1662	Street	1980	1	WF	DUP RES	SG	M	NC
128	1663	1311 N. 11th Street	1980	1	WF	RES	SG	M	NC
129	1664	1318 N. 11th Street	1972	1	WF	RES	SG	M	NC
130	1665	1322 N. 11th Street	1972	1	WF	RES	SG	M	NC
131	1666	1328 N. 11th Street	1972	1	WF	RES	SG	M	NC
132	1667	1332 N. 11th Street	1972	1	WF	RES	SG	M	NC
133	1690	1338 N. 11th Street	1952	1	WF	RES	SG	M	C
134	1689	1344 N. 11th Street	1952	1	WF	RES	SG	M	C
135	1891	1400 N. 11th Street	1962	1	BV	REL	IG	M	C
136	1688	1410 N. 11th Street	1951	1	WF	RES	SG	M	C
137	1687	1518 N. 11th Street	1958	1	BV	RES	SG	M	C
137a		1518 N. 11th Street	1960	1.5	WF	GAR	SG	M	C
138	1686	1524 N. 11th Street	1951	1	WF	RES	SG	M	C
139	1654	1529 N. 11th Street	1952	1	WF	RES	SG	M	C
140	1685	1530 N. 11th Street	1947	1.5	WF	RES	SG CAPE	M	C
140a	1685	1530 N. 11th Street	1947	1	WF	GAR	FG	M	C
141	1665	1534 N. 11th Street	1942	1	WF	RES	SG	M	C
142	1727	1600 N. 11th Street	1945	1	WF	RES	SG	M	C
143	1666	1601 N. 11th Street	1912	1.5	WF	RES	SG	M	C
144	1667	1603 N. 11th Street	1927	1.5	WF	RES	SG	M	C
144a	1667	1603 N. 11th Street	1927	1	WF	GAR	FG	M	C
145	1668	1607 N. 11th Street	1928	1	BR	RES	FG	M	C
146	1669	1609 N. 11th Street	1928	1	BR	RES	FG	M	C
147	1670	1612 N. 11th Street	1951	1	WF	RES	IG RANCH	M	C
148	1682	1622 N. 11th Street	1952	1	WF	RES	SG	M	C
149	1670	1623 N. 11th Street	1928	1	BR	RES	FG	M	C
150	1671	1625 N. 11th Street	1928	1	BR	RES	FG	M	C
151	1681	1630 N. 11th Street	1950	1	WF	RES	SG	M	C
152	1689	1700 N. 11th Street	1950	1	WF	RES	SG	M	C
152a	1689	1700 N. 11th Street	1950	1	WF	GAR	SG	M	C
152b	1689	1700 N. 11th Street	1950	1	WF	GAR	FG	M	C
153	1679	1716 N. 11th Street	1930	1	WF	RES	SG CRFTS	M	C
154	1678	1720 N. 11th Street	1950	1	WF	RES	SG	M	C
155	1672	1723 N. 11th Street	1930	1	WF	RES	GL	M	C
156	1676	1724 N. 11th Street	1922	1.5	WF	RES	SG BUNG	M	C
157	1673	1725 N. 11th Street	1958	1	BV	RES	SG	M	C
157a	1673	1725 N. 11th Street	1958	1	WF	GAR	SG	M	C
158	1675	1730 N. 11th Street	1930	1	WF	RES	SG	M	C
159	1674	1731 N. 11th Street	1970	1	BV	REL	FG	M	C
160	1786	916 N. 12th Street	1907	1	WF	RES	GL	M	C
161	1785	920 N. 12th Street	1907	1	WF	RES	GL	M	C

**Paducah Northside Historic District**

**McCracken County, KY**

**Name of Property**

**County and State**

162	1784	924 N. 12th Street	1925	1	WF	RES	FG	M	C
162a	1784	924 N 12th Street	1930	1	WF	GAR	SG	M	C
163	1705	925 N. 12th Street	1972	1	CB	COMM	FLAT	M	NC
164	1783	926 N. 12th Street	1925	1	WF	RES	FG	M	C
165	1706	927 N. 12th Street	1925	1	WF	RES	GL	M	C
166	1782	1006 N. 12th Street	1926	1	WF	RES	FG	M	C
167	1781	1008 N. 12th Street	1925	1	BV	RES	GL	MAJOR	NC
167a	1781	1008 N. 12th Street	1970	1	WF	STG	FG	M	C
168	1651	1029 N. 12th Street	1980	1	wf	RES	MOBILE	M	NC
168	1780	1030 N. 12th Street	1902	1	WF	RES	SHOT HIP	M	C
169	1779	1032 N. 12th Street	1927	1	WF	RES	SG	M	C
170	1707	1033 N. 12th Street	1898	1	WF	RES	GL	M	C
171	1778	1034 N. 12th Street	1927	1	WF	RES	SG	M	C
172	1708	1037 N. 12th Street	1908	1	WF	RES	GL	M	C
173	1777	1100 N. 12th Street	1970	1	CB	COMM	FLAT; MOD.	M	NC
174	1709	1101 N. 12th Street	1992	1	WF	RES	SG	M	NC
175	1776	1118 N. 12th Street	1956	1	CB	COMM	SG	M	C
175a	1776	1118 N. 12th Street	1956	1	WF	GAR	SG	M	C
176	1710	1119 N. 12th Street	1917	1	WF	RES	SG	M	C
177	1775	1122 N. 12th Street	1957	1	BV	RES	SG; RANCH	M	C
178	1774	1130 N. 12th Street	1950	1	WF	RES	IG	M	C
178a	1774	1130 N. 12th Street	1990	1	METAL	STG	FG	M	NC
179	1711	1133 N. 12th Street	1907	1	WF	RES	IG	M	C
180	1712	1135 N. 12th Street	1907	1	WF	RES	IG	M	C
181	1773	1138 N. 12th Street	1950	1	WF	RES	IG	M	C
182	1772	1150 N. 12th Street	1945	1	WF	RES	FG	MAJ; porch removed	NC
183	1713	1155 N. 12th Street	1926	1.5	BR	RES	SG; BUNG	M	C
183a	1713	1155 N. 12th Street	1926	1	WG	GAR	FG	M	C
184	1771	1160 N. 12th Street	1916	1	WF	RES	IG	M	C
185	1770	1162 N. 12th Street	1907	1	WF	RES	FG; SHOT	M	C
186	1769	1164 N. 12th Street	1912	1	WF	RES	IN	M	C
186a	1769	1164 N. 12th Street	1970	1	WF	STG	FG	M	C
187	1768	1170 N. 12th Street	2000	1	CB	COMM	FLAT	M	NC
188	1714	1201 N. 12th Street	1924	1	BR	COMM	FLAT	M	C
188a	1714	1201 N. 12th Street	1960	1	WF	STG	SG	M	C
190	1715	1203 N. 12th Street	2005	1	WF	RES	HIP	M	NC
191	1716	1205 N. 12th Street	1925	1	WF	RES	FG	M	C
192	1767	1208 N. 12th Street	1993	1	WF	RES	FG	M	NC
193	1717	1209 N. 12th Street	1927	1.5	WF	RES	SG; BUNG	M	C
194	1766	1221 N. 12th Street	1917	1.5	WF	RES	SG; BUNG	M	C
195	1765	1223 N. 12th Street	1923	1	WF	RES	SG	M	C
196	1718	1228 N. 12th Street	1917	1	WF	RES	SG	M	C
197	1764	1231 N. 12th Street	1917	1	WF	RES	IG	M	C
198	1719	1232 N. 12th Street	1999	1	WF	RES	FG	M	NC
199	1720	1234 N. 12th Street	1917	1	BR	RES	HIP	MODERATE	C
199a	1720	1234 N. 12th Street	1960	1	WF	GAR	SG	M	C
200	1721	1244 N. 12th Street	1910	1.5	WF	RES	FG	M	C
201	1722	1239-1249 N. 12th Street	1965	2	BR	REL	FG	M	C
	1723 (10 detached buildings)								
202-211		1301 N. 12th Street	2000	1	BV	RES	SG	M	NC
212	1761	1304 N. 12th Street	1951	1.5	WF	RES	SG; BUNG	M	C

**Paducah Northside Historic District**

**McCracken County, KY**  
County and State

Name of Property

213	1762	1310 N. 12th Street	1951	1	WF	RES	SG	M	C
214	1760	1316 N. 12th Street	1945	1	WF	RES	SG	M	C
215	1759	1324 N. 12th Street	1946	1	BV	RES	IG; M TRAD	M	C
216	1758	1328 N. 12th Street	1946	1	ST V	RES	HIP	MOD	C
217	1757	1400 N. 12th Street	1946	1.5	WF	RES	HIP	MAJ; POP-UP	NC
217a	1757	1400 N. 12th Street	1946	1	WF	GAR	FG	M	C
218	1756	1402 N. 12th Street	1929	1.5	BV	RES	FG	M	C
218a	1756	1402 N. 12th Street	1929	1	BR	GAR	FG	M	C
219	1937	1405 N. 12th Street	1920	1	WF	RES	SG	M	C
220	1755	1407 N. 12th Street	1917	1	WF	RES	HIP	M	C
221	1754	1409 N. 12th Street	1952	1	WF	RES	SG	M	C
222	1753	1411 N. 12th Street	1917	1	WF	RES	FG	M	C
222	1752	1413 N. 12th Street	1910	1	WF	RES	FG	M	C
222a	1752	1413 N. 12th Street	1960	1	WF	GAR	FG	M	V
223	1751	1503 N. 12th Street	1900	1	WF	RES	HIP	M	C
223a	1751	1503 N. 12th Street	1960	1	WF	GAR	GAMB	M	C
224	1750	1505 N. 12th Street	1948	1	WF	RES	SG	M	C
225	1725	1508 N. 12th Street	1917	1	WF	RES	SG	M	C
225a	1725	1508 N. 12th Street	1960	1	WF	GAR	SG	M	C
226	1726	1510 N. 12th Street	1927	1	WF	RES	FG	M	C
226a	1726	1510 N. 12th Street	1950	1	WF	GAR	FG	M	C
227	1749	1514 N. 12th Street	1948	1	WF	RES	SG	M	C
228	1723	1515 N. 12th Street	1951	1	WF	RES	SG	M	C
229	1724	1519 N. 12th Street	1950	1	BV	RES	SG	M	C
229a	1724	1519 N. 12th Street	1950s	1	WF	GAR	FLAT	M	C
230	1747	1525 N. 12th Street	1950	1	WF	RES	SG	M	C
230a	1747	1525 N. 12th Street	1960	1	WF	GAR	GF	M	C
230b	1747	1525 N. 12th Street	1950	2	WF	GAR	SG	M	C
231	1748	1535 N. 12th Street	1939	1.5	WF	RES	SG; CAPE	M	C
232	1727	1600 N. 12th Street	1917	1.5	WF	RES	SG; BUNG	M	C
233	1746	1601 N. 12th Street	1920	1.5	WF	RES	FG	M	C
233a	1746	1601 N. 12th Street	1920	1	WF	GAR	FG	M	C
233b	1746	1601 N. 12th Street	1960	1	WF	GAR	FG	M	C
234	1744	1603 N. 12th Street	1920	1.5	WF	RES	SG; BUNG	M	C
235	1745	1605 N. 12th Street	1920	1.5	WF	RES	FG	M	C
235a	1745	1605 N. 12th Street	2000	1	WF	GAR	FG	M	NC
236	1728	1606 N. 12th Street	1927	1.5	WF	RES	SG; BUNG	M	C
237	1729	1614 N. 12th Street	1917	1	WF	RES	FG	MOD	C
238	1730	1621 N. 12th Street	1922	1.5	WF	RES	SG; BUNG	M	C
239	1731	1623 N. 12th Street	1922	2	WF	RES	GAMB; DCR	M	C
239a	1731	1623 N. 12th Street	1930	1	WF	GAR	SG	M	C
240	1732	1627 N. 12th Street	1926	1.5	WF	RES	SG; BUNG	M	C
241	1938	1628 N. 12th Street	1928	1	WF	RES	HIP	M	C
242	1743	1630 N. 12th Street	1920	1.5	WF	RES	HIP; BUNG	M	C
243	1733	1701 N. 12th Street	1958	1	SV	RES	HIP	M	C
244	1742	1702 N. 12th Street	1932	1	WF	RES	FG	M	C
245	1734	1705 N. 12th Street	1937	1	WF	RES	FG	M	C
245a	1735	1705 N. 12th Street	1937	1	WF	GAR	FG	M	C
246	1741	1716 N. 12th Street	1907	1.5	BV	RES	HIP	M	C
246a	1741	1716 N. 12th Street	1920	1	WF	GAR	FG	M	C
247	1735	1721 N. 12th Street	1907	1.5	WF	RES	FG	MOD	C

**Paducah Northside Historic District**

**McCracken County, KY**

**Name of Property**

**County and State**

247a	1735	1721 N. 12th Street	1920	1.5	WF	GAR	FG	M	C
248	1740	1726 N. 12th Street	1900	1.5	WF	RES	HIP	M	C
249	1739	1732 N. 12th Street	1952	1	WF	RES	IG	MOD	C
250	1736	1736 N. 12th Street	1905	1.5	WF	RES	IG	M	C
250a	1736	1736 N. 12th Street	1940	1	WF	GAR	HIP	M	C
251	1738	1738 N. 12th Street	1956	1	WF	RES	SG	M	C
252	1727	1742 N. 12th Street	1904	2	BR	RES	HIP	M	C
253	1787	1004 N. 13th Street	1990	1	BR	COMM	HIP	MOD	NC
381	1787	1103 N. 13th Street	1920	1	WF	RES	HIP	M	C
254	1788	1105 N. 13th Street	1896	1	WF	RES	IG	M	C
255	1789	1107 N. 13th Street	1920	WF	1	RES	FG	M	C
256	1791	1113 N. 13th Street	1950	BV	1.5	RES	IG; M TRAD	M	C
257	1792	1115 N. 13th Street	1920	WF	1.5	RES	FG	M	C
		1111/1121 N. 13th Street							
258	1790	1896	BR		RES	HIP	M	C	
259	1840	1148 N. 13th Street	1920	WF	1	RES	IG	M	C
260	1793	1149 N. 13th Street	1920	WF	1	RES	FG	M	C
261	1794	1151 N. 13th Street	1951	WF	1	RES	SG	M	C
262	1795	1153 N. 13th Street	1920	BV	1.5	RES	HIP; BUNG	M	C
263	1839	1154 N. 13th Street	1920	WF	1	RES	FG	M	C
264	1796	1155 N. 13th Street	2020	WF	1	RES	SG	MOD	NC
265	1797	1159 N. 13th Street	1901	WF	1	RES	SG	M	C
265a	1797	1159 N. 13th Street	1960	WF	1	GAR	FG	M	C
266	1838	1160 N. 13th Street	1920	WF	1	RES	IG	M	C
267	1798	1161 N. 13th Street	1921	WF	1	RES	IG	M	C
268	1837	1161 N. 13th Street	1930	WF	1	RES	IG	MAJOR	NC
269	1837	1200 N. 13th Street	1950	CB	1	COMM	SG	M	C
269a	1837	1200 N. 13th Street	1977	WF	1	GAR	FG	M	C
270	1799	1201 N. 13th Street	1922	WF	1	RES	HIP	M	C
270a	1799	1201 N. 13th Street	1950	WF	1	GAR	FG	M	C
		1204-1206 N. 13th Street							
271	1836	1930	WF	1	RES; DUP	FG	M	C	
272	1800	1216 N. 13th Street	1912	WF	1	RES	IG	M	C
273	1835	1217 N. 13th Street	1946	BV	1	RES	SG	M	C
274	1801	1218 N. 13th Street	1971	BV	1	RES	FG	M	NC
275	1834	1219 N. 13th Street	1946	BV	1	RES	FG	M	C
		1906;							
276	1833	1221 N. 13th Street	1966	WF	1	RES	FG	M	C
277	1832	1239 N. 13th Street	1931	WF	1	RES	SG	M	C
278	1802	1240 N. 13th Street	1907	WF	1	RES	IG	M	C
279	1831	1241 N. 13th Street	1935	WF	1	RES	FG	M	C
279a	1831	1240 N. 13th Street	1935	WF	1	GAR	FG	M	C
280	1830	1245 N. 13th Street	1912	WF	1	RES	SG	M	C
281	1804	1246 N. 13th Street	1917	WF	1	RES	IG	M	C
282	1802	1250 N. 13th Street	1922	WF	1	RES	SG; BUNG	M	C
282a	1802	1250 N. 13th Street	1960	CB	1	GAR	FG	M	C
283	1806	1252 N. 13th Street	1927	WF	1	RES	SG	M	C
284	1808	1305 N. 13th Street	1925	WF	1	RES	HIP; CRFTS	M	C
285	1809	1309 N. 13th Street	1925	WF	1	RES	HIP; CRFTS	M	C
286	1810	1315 N. 13th Street	1925	WF	1	RES	HIP; CRFTS	M	C
287	1811	1317 N. 13th Street	1925	WF	1	RES	HIP	M	C
288	1812	1325 N. 13th Street	1925	WF	1	RES	FG	M	C
289	1813	1329 N. 13th Street	1925	WF	1	RES	HIP	M	C

**Paducah Northside Historic District**

**McCracken County, KY**

**Name of Property**

**County and State**

290	1814	1331 N. 13th Street	1917	WF	1	RES	SG	M	C
291	1829	1332 N. 13th Street	1959	WF	1	SV	SG	M	C
292	1815	1335 N. 13th Street	1917	WF	1	RES/COMM	HIP	M	C
293	1828	1509 N. 13th Street	1922	WF	1	RES	HIP	M	C
294	1827	1511 N. 13th Street	1917	WF	1	RES	SG	M	C
295	1826	1519 N. 13th Street	1912	WF	1	RES	HIP; CRFTS	M	C
295a	1826	1519 N. 13th Street	1960	WF	1	GAR	SG	M	C
296	1825	1527 N. 13th Street	1950	WF	1	RES	IG	M	C
296a	1825	1527 N. 13th Street	1960	WF	1	GAR	SG	M	C
297	1824	1529 N. 13th Street	1950	WF	1	RES	FG	M	C
297a	1824	1529 N. 13th Street	1970	WF; WF;	1	GAR	SG	M	C
298	1823	1535 N. 13th Street	1955	PERMA	1	RES	HIP; RANCH	M	C
299	1822	1703 N. 13th Street	1927	WF	1	RES	SG; BUNG	M	C
300	1821	1705 N. 13th Street	1948	WF	1.5	RES	SG	M	C
300a	1821	1705 N. 13th Street	1948	CB	1	GAR	FG	M	C
301	1820	1709 N. 13th Street	1922	WF	1.5	RES	SG	M	C
301a	1820	1709 N. 13th Street	1960	WF	1	GAR	FG	M	C
302	1819	1715 N. 13th Street	1927	WF	1.5	RES	HIP; CRFTS	M	C
302a	1819	1715 N. 13th Street	1950	WF	1	GAR	FG	M	C
303	1818	1719 N. 13th Street	1926	WF	1	RES	HIP	M	C
303a	1818	1719 N. 13th Street	1960	WF	1	GAR	FG	M	C
304	1817	1723 N. 13th Street	1927	WF	1	RES	FG	M	C
305	1816	1737 N. 13th Street	1927	WF	1	RES	FG	M	C
306	1856	1126 N. 14th Street	2003	WF	1	RES	SG	M	C
306a	1856	1126 N. 14th Street	2003	METAL	1	GAR	FG	MOD	NC
307	1855	1128 N. 14th Street	2003	WF	1	RES	SG	M	C
308	1854	1130 N. 14th Street	1920	WF	1	RES	FG; SHOT	M	C
309	1853	1138 N. 14th Street	2007	WF	1	RES	FG	MOD	C
310	1839	1142 N. 14th Street	1920	WF	1	RES	FG	M	C
311	1852	1144 N. 14th Street	2000	BV	2	RES	MANSARD	MOD	NC
311a	1851	1144 N. 14th Street	2000	WF	1	GAR	FG	M	NC
310	1852	1146 N. 14th Street	2000	WF	1	RES	HIP	M	C
311	1850	1152 N. 14th Street	1933	WF	1	RES	FG	M	C
312	1849	1210 N. 14th Street	1947	WF	1	RES	HIP	M	C
313	1848	1216 N. 14th Street	1971	WF	1	RES	HIP	M	C
314	1847	1220 N. 14th Street	1920	WF	1	RES	HIP	M	C
315	1846	1304 N. 14th Street	1920	WF	1	RES	FG	M	C
316a	1846	1304 N. 14th Street	1990	CB	1	GAR	SG	M	NC
317	1845	1308 N. 14th Street	1937	WF	1	RES	IG	M	C
318a	1845	1308 N. 14th Street	2000	WF	1	GAR	SG	M	NC
319	1844	1310 N. 14th Street	1920	WF	1	RES	SG	M	C
320	1843	1320 N. 14th Street	1937	WF	1	RES	FG; SHOT	M	C
322	1841	1328 N. 14th Street	1910	WF	1	RES	IG	M	C
323	1842	1001 Burnett Street	1979	WF	1	RES	IG	M	C
324	1863	1015 Burnett Street	1979	WF	1	RES	IG	M	NC
325	1862	1019 Burnett Street	1977	WF	1	RES	SG	M	NC
326	1861	1025 Burnett Street	1977	WF	1	RES	SG	M	NC
327	1865	1038 Burnett Street	1950	BR	1	REL	FG	M	C
328	1866	1106 Burnett Street	1971	WF	1	RES	SG	M	NC
329	1860	1111 Burnett Street	1972	BV	1	RES	FG	M	NC
330	1867	1114 Burnett Street	1972	BV	1	RES	SG	M	NC

**Paducah Northside Historic District**

**McCracken County, KY**

**Name of Property**

**County and State**

331	1859	1115 Burnett Street	1972	BV	2	RES	SG	M	NC
332	1858	1121 Burnett Street	1956	BV	1	RES	FG	M	C
333	1868	1308 Burnett Street	1907	WF	1	RES	GF; SHOT	M	C
334	1868	1316 Burnett Street	1906	WF	1	RES	SG	M	C
335	1869	1320 Burnett Street	1905	WF	1	RES	FG; SHOT	M	C
336	1870	1322 Burnett Street	1906	WF	1	RES	FG; SHOT	MAJ; porch removed	NC
337	1857	1335 Burnett Street	2007	CB	1	REL	SG	M	NC
338	1909	1001 Ellis Street	1932	WF	1	RES	SG	M	C
339	1897	1008 Ellis Street	1915	WF	1	RES	HIP	M	C
339a	1897	1008 Ellis Street	1930	WF	1	GAR	SG	M	C
340	1898	1010 Ellis Street	2003	WF	1	RES	HIP	M	NC
341	1908	1021 Ellis Street	1931	WF	1	RES	FG	M	C
342	1907	1025 Ellis Street	1915	WF	1	RES	HIP	MOD	C
343	1906	1027 Ellis Street	1906	WF	1	RES	HIP	M	C
343a	1906	1027 Ellis Street	1960	WF	1	GAR	SG	M	C
344	1905	1029 Ellis Street	1925	WF	1	RES	FR; CRFTS	M	C
344a	1905	1029 Ellis Street	1960	WF	1	STG	SG	M	C
345	1904	1101 Ellis Street	1920	WF	1	RES	IG	M	C
346	1903	1103 Ellis Street	1920	WF	1	RES	SG	M	C
347	1902	1105 Ellis Street	1920	WF	1	RES	FG	M	C
348	1899	1106 Ellis Street	1922	WF	1	RES	HIP; CRFTS	M	C
349	1900	1108 Ellis Street	1915	WF	1	RES	FG	M	C
350	1901	1110 Ellis Street	1920	WF	1	RES	HIP; CRFTS	M	C
350a	1901	1110 Ellis Street	1950	WF	1	GAR	FG	M	C
351	1910	1114 Fern Street	1932	WF	1	RES	SG	M	C
352	NEED NUM-BER	1040 Flournoy Street	1956	N/A	N/A	SITE	N/A	N/S	NC SITE
353	1872	1206 Flournoy Street	1979	WF	1	RES	HIP	M	C
354	1873	1258 Flournoy Street	1941	WF; BV	1	RES	SG	MAJ	NC
355	1875	1335 Flournoy Street	1932	WF	1	RES	SG	M	C
356	1892	1024 Greer Street	1928	WF	1	RES	HIP; CRFTS	M	C
357	1893	1034 Greer Street	1960	WF; PERMA	1	RES	IG	M	C
357a	1893	1034 Greer Street	1960	WF	1	GAR	FG	M	C
358	1894	1100 Greer Street	1926	WF	1	RES	FG	M	C
358a	1894	1100 Greer Street	1960	WF	1	GAR	FG	M	C
359	1895	1104 Greer Street	1922	WF	1	RES	FG	M	C
360	1896	1106 Greer Street	1932	WF	1	RES	FG	M	C
361	1880	1005 Grover Street	1907	WF	1	RES	IG	M	C
361a	1880	1005 Grover Street	1960	WF	1	GAR	FG	M	C
362	1877	1009 Grover Street	1979	WF	1	RES	SG	M	NC
362a	1877	1009 Grover Street	2000	METAL	1	GAR	GF; SHOT	M	NC
363	1021	1021 Grover Street	1980	WF	1	RES	SG	M	NC
364	1876	1026 Grover Street	2000	WF	1	RES	FG	M	NC
365	1911	1008 Olive Street	1932	WF	1	RES	FG	M	C
366	1912	1114 Olive Street	1920	CB	1.5	RES	FG; CRFTS	M	C
367	1913	1217 Olive Street	1937	WF	1	RES	SG	M	C
368	1926	1025 Palm Street	1927	WF	1	RES	FG	M	C
368a	1926	1025 Palm Street	2000	WF	1	GAR	FG	M	NC
369	1925	1029 Palm Street	1937	WF	1	RES	FG	M	C
369a	1925	1029 Palm Street	1950	WF	A	GAR	FG	M	C
370	1924	1031 Palm Street	1947	WF	1	RES	FG	M	C



**Paducah Northside Historic District**

**McCracken County, KY**

**Name of Property**

**County and State**

370a	1947	1031 Palm Street	1960	WF	1	GAR	FG	M	C
370b	1947	1031 Palm Street	1047	1947	1.5	STG	FG	M	C
371	1923	1033 Palm Street	1937	BV	1	RES	FG	M	C
371a	1923	1033 Palm Street	1950	CB	2	GAR	FG	M	C
372	1922	1101 Palm Street	1928	BV	1.5	RES	FG	M	C
373	1921	1103 Palm Street	1928	WF	1	RES	FG	M	C
374	1920	1105 Palm Street	1942	WF	1	RES	FG	M	C
375	1919	1107 Palm Street	1927	WF	1	RES	FG	M	C
		1111-1113 Palm Street							
376	1918	1111-1113 Palm Street	1952	WF	1	RES; DUB	FG	M	C
377	1917	1125 Palm Street	1925	WF	1	RES	FG	M	C
378	1916	1127 Palm Street	1924	WF	1	RES	SG	M	C
379	1915	1131 Palm Street	1924	WF	1.5	RES	SG; BUNG	M	C
379a	1915	1131 Palm Street	1924	WF	1.5	STG	FG	M	C
380	1914	1220 Palm Street	1922	WF	1	RES	HIP	M	C
		1201 Hampton Avenue							
381	1941	1201 Hampton Avenue	1925	WF	1	RES	HIP	M	C
		1204 Hampton Avenue							
382	1942	1204 Hampton Avenue	1917	WF	1	RES	SG	M	C
		1204 Hampton Avenue							
382a	1942	1208 Hampton Avenue	1950	CB	1	GAR	FG	M	C
		1208 Hampton Avenue							
383	1943	1212 Hampton Avenue	1925	WF	1	RES	SG	M	C
		1212 Hampton Avenue							
384	1944	1212 Hampton Avenue	1917	WF	1	RES	SG	M	C
		1212 Hampton Avenue							
384a	1944	1216 Hampton Avenue	1940	WF	1	GAR	FG	M	C
		1216 Hampton Avenue							
385	1945	1221 Hampton Avenue	1917	WF	1	RES	SG	M	C
		1221 Hampton Avenue							
387	1946	1223 Hampton Avenue	1917	WF	1	RES	FG	M	C
		1223 Hampton Avenue							
388	1947	1224 Hampton Avenue	1967	WF	1	RES	FLAT	MOBILE	NC
		1224 Hampton Avenue							
389	1948	1229 Hampton Avenue	1917	WF	1	RES	SG	M	C
		1229 Hampton Avenue							
390	1949	1230 Hampton Avenue	1935	WF	1	RES	FG	M	C
		1230 Hampton Avenue							
391	1950	1200 Salem Avenue	1917	WF	1	RES	FG	M	C
392	1951	1200 Salem Avenue	1907	WF	1	RES	SG	M	C
393	1952	1201 Salem Avenue	2002	WF	1	RES	FG	M	NC
394	1953	1202 Salem Avenue	1907	WF	1	RES	SG	M	C
395	1954	1204 Salem Avenue	1907	WF	1	RES	SG	M	C
396	1955	1205 Salem Avenue	1917	WF	1.5	RES	SG; BUNG	M	C
397	1956	1221 Salem Avenue	1912	WF	1	RES	FG	M	C
398	1957	1225 Salem Avenue	2013	WF	1	RES	FG	M	NC
399	1644	1001 Boyd Street	1950	BV	1	RES	SG; RANCH	M	C
400	1645	1008 Boyd Street	1917	WF	1	RES	FG	M	C
401	1646	1010 Boyd Street	1932	WF	1	RES	FG	M	C
402	1647	1012 Boyd Street	1995	WF	1	RES	SG	M	NC
403	1643	1013 Boyd Street	1907	WF	1	RES	CG	M	C
404	1652	1017 Boyd Street	1983	WF	1	RES	SG; RANCH	M	NC
404a	1652	1017 Boyd Street	1983	WF	1	STG	SG	M	NC
404b	1652	1017 Boyd Street	1983	WF	1	STG	SG	M	NC
405	1641	1103 Boyd Street	1924	WF	1	RES	TRUNC HIP	M	C
406	1640	1117 Boyd Street	1924	WF	1	RES	CG	M	C
407	1639	1119 Boyd Street	1924	WF	1	res	CG TRUNC	MAJ	NC
407a	1639	1119 Boyd Street	1924	WF	1	STG	FG	M	C
408	1638	1121 Boyd Street	1924	WF	1	RES	HIP	M	C

**Paducah Northside Historic District**

**Name of Property**

**McCracken County, KY**

**County and State**

409	1637	1129 Boyd Street	1981	WF	1	RES	SG	M	NC
410	1704	1002 Gardner Avenue	1979	WF	1	RES	SG	M	NC
411	1703	1008 Gardner Avenue	1976	WF	1	RES	SG	M	NC
412	1702	1014 Gardner Avenue	1979	WF	1	RES	SG	M	NC
413	1701	1020 Gardner Avenue	1920	WF	1	RES	HIP	M	C
414	1700	1022 Gardner Avenue	1976	BV	1	RES	HIP	M	NC
414a	1700	1022 Gardner Avenue	1976	BV	1	GAR	SG	M	NC
415	1699	1032 Gardner Avenue	1962	WF	1	RES	HIP	M	C
415a	1699	1032 Gardner Avenue	1979	BV	1	GAR	HIP	M	NC
416	1880	1060-1062 Northview Street	2012	WF	1	RES	SG	M	NC

Paducah Northside Historic District  
Name of Property

McCracken County, KY  
County and State

## 8. Statement of Significance

### Applicable National Register Criteria

(Mark "x" in one or more boxes for the criteria qualifying the property for National Register listing.)

- ☒ A. Property is associated with events that have made a significant contribution to the broad patterns of our history.
- ☐ B. Property is associated with the lives of persons significant in our past.
- ☒ C. Property embodies the distinctive characteristics of a type, period, or method of construction or represents the work of a master, or possesses high artistic values, or represents a significant and distinguishable entity whose components lack individual distinction.
- ☐ D. Property has yielded, or is likely to yield, information important in prehistory or history.

### Criteria Considerations

(Mark "x" in all the boxes that apply.)

- ☐ A. Owned by a religious institution or used for religious purposes
- ☐ B. Removed from its original location
- ☐ C. A birthplace or grave
- ☐ D. A cemetery
- ☐ E. A reconstructed building, object, or structure
- ☐ F. A commemorative property
- ☐ G. Less than 50 years old or achieving significance within the past 50 years

Paducah Northside Historic District  
Name of Property

McCracken County, KY  
County and State

**Areas of Significance**

(Enter categories from instructions.)

ARCHITECTURE

COMMUNITY PLANNING AND DEVELOPMENT

ETHNIC HERITAGE/African-American

**Period of Significance**

c. 1890-1968

**Significant Dates**

**Significant Person**

(Complete only if Criterion B is marked above.)

**Cultural Affiliation**

**Architect/Builder** Unidentified

**Statement of Significance Summary Paragraph** (Provide a summary paragraph that includes level of significance, applicable criteria, justification for the period of significance, and any applicable criteria considerations.)

Summary

The Paducah Northside Historic District is locally significant under Criterion A for *community development and planning* and *ethnic heritage/African American* and Criterion C for *architecture*. For Criterion A, the district is significant for community planning and development. It is comprised primarily of formally-platted additions to the City of Paducah, representing the growth of the city from the early twentieth century and after that throughout the Period of Significance. These additions encompass a series of planned subdivisions with formal and repetitive lot sizes, streets, and alleys. The Criterion A significance

Paducah Northside Historic District

McCracken County, KY  
County and State

Name of Property

for *ethnic heritage* is owed to this neighborhood's decades-old close association with Paducah's African-American population who lived, worshipped, and were educated here. The Criterion C significance derives from its position as a strong, locally-significant, and dense concentration of chiefly residential buildings built between the last decade of the nineteenth century and the late 1960s and including examples of several of the house types and styles of design popular during the Period of Significance, which begins c. 1890 and extends to 1968 for both Criteria. Found within the district are multiple examples of Craftsman-style Bungalows, along with numerous examples of vernacular architecture that reflect local building traditions and the skill of local craftspeople.

The district retains integrity in all seven qualities defined in the National Register guidelines, exhibiting those physical qualities, associative values, design features, and specific aspects of construction that date from within the Period of Significance.

---

**Narrative Statement of Significance** (Provide at least one paragraph for each area of significance.)

Background

The Commonwealth of Kentucky was established in 1792. However, the Paducah environs had been first visited by European settlers as early as 1778 when George Rogers Clark (1752-1818), a Revolutionary General who had led the Kentucky Militia through much of the War, came to the Ohio River in what would become Illinois. Hickman County was established in 1821; McCracken County was originally part of Hickman County, but as the population grew, the larger Hickman County was divided into a new Hickman (erected 1821), Graves (1824) Calloway (1822), and McCracken Counties, the latter of which was established on January 15, 1825 and bore the name of Captain Virgil McCracken, who was killed at the Battle of the River Raisin in Michigan during the War of 1812.

The settlement that would become Paducah was first known as Pekin and was initially settled c. 1815 by European settlers attracted to the site due to its location on the Ohio River. The community was originally populated by a mix of Native Americans and Europeans who lived harmoniously, trading both goods and services.

In 1827, George Rogers Clark's brother, William (1770-1838), serving as Superintendent of Indian Affairs for the Mississippi-Missouri region, arrived in Pekin with a deed issued by the United States Supreme Court identifying him as the sole owner of the land. It is thought that Clark was already aware of the settlers that had arrived before him. He offered to sell them the land that they had been occupying, otherwise they would be forced to relocate. Clark's new town was platted and was named in honor of the largest nation of Native Americans that had ever populated North America, the Padoucas, who had occupied much of the central plains from the Black Hills to Arkansas.<sup>4</sup> Lewis and Clark had made acquaintance with many tribe members while on their renowned westward trek. Clark wrote a letter to his son clearly

---

<sup>4</sup> George Bird Grinnell, "Who Were the Padoucas?," *American Anthropologist*, New Series 22:3 (July-September 1920), 248-260.

Paducah Northside Historic District

McCracken County, KY  
County and State

Name of Property

stating the reason for naming of the town. The community was incorporated in 1830 and two years later became the county seat of McCracken County.

Early on, Paducah thrived due to its port facilities along the Ohio stood as a leading waterway plied by countless steamboats for many decades.<sup>5</sup> A factory that manufactured red bricks was established and a foundry for making rail and locomotive components was built, ultimately contributing to a river- and rail-related industrial economy. In 1856, Paducah was chartered as a city and the burgeoning community continued to capitalize on its geographic location by becoming the site of dry dock facilities for steamboats and towboats and headquarters for a series of barge companies. Other riverfront industries depicted on *Sanborn Fire Insurance Maps* included the Paducah Furniture Manufacturing Company, Johnson Foundry & Machine Company, and the Langstaff-Orm Manufacturing Company, among many others.<sup>6</sup> Eventually, the City became an important railway hub for the Illinois Central Railroad, largely due to its proximity to the coal fields in Kentucky and Illinois. While none of these industries were within the Northside Historic District, countless workers made their homes in the district throughout its decades-long Period of Significance.

Viewing the demographics of the City, at the time of the 1830 Census, Paducah's population stood at 105. Over the next twenty years the population grew to 2,428 in 1850, and 4,590 in 1860. By the time the Civil War ended, the 1870 population was 6,866 and 8,036 in 1880. Major growth of 59.2% occurred by 1890, when 12,797 made Paducah their home. Industrial development during the 1890s led to another demographic boost of more than 50% and in 1900, the population stood at 19,446. By 1920, as the area that would become the North Side Historic District was growing, 24,735 lived in the community. The population fluctuated during the ensuing decades, consistently dropping between 1950 and 2010. The 2020 Census recorded a population of 27,137 within the confines of the City proper; 73% of the population was White and 24% African-American. The balance consisted of Pacific Islanders, Native Americans, and Hispanics.<sup>7</sup>

Returning to the history of the community, Kentucky claimed a neutral position at the outset of the Civil War, but when a Confederate force occupied Columbus, a Union force under General Ulysses S. Grant responded by occupying Paducah. Throughout most of the conflict, Paducah served as a major supply depot for Federal forces along the Ohio, Mississippi, and Tennessee River systems. Throughout most of the conflict, Union Col. Stephen G. Hicks was in charge of Paducah.

During much of the Period of Significance of the North Side Historic District, education in Paducah was segregated and remained so until the early 1970s. Newspaper references describe the 1916 Henry Clay School and the 1905 McKinley School, along with the Lincoln Elementary (1894) and High School (1920), all located outside the historic district. With specific reference to this historic district and corresponding directly to its demographics, the Whittier School (Fig. 2) was built c. 1907 and Northside

<sup>5</sup> Nathan Lynn, "A Short History of Paducah, Kentucky," (Paducah: McCracken County Public Library, 2012),

<sup>6</sup> *Sanborn Fire Insurance Maps, Paducah, Kentucky*, (New York: Sanborn Map Company, 1893, 1897, 1901, 1906, and paste-overs.

<sup>7</sup> U. S. Census data, accessed August 15, 2021.

Paducah Northside Historic District

McCracken County, KY  
County and State

Name of Property

Elementary dated from 1956; neither are extant. The School District at first abandoned Northside, then it in 1971 it became a Head Start facility as part of the City's integration plan, and eventually it passed into private ownership. Prior to its closing, Northside had an enrollment of 185 Black students and 35 White<sup>8</sup> The building was put out for bid in 2003 and was demolished in 2015, leaving only a brick chimney (Photo 6 of 21). A multi-building public housing complex occupies the site of Whittier School.

Social services were provided to the African-American population by constructing a substantial institutional building at 1335 Burnett Street, at the northeast corner of the historic district. Built as the Home of the Friendless, but not extant, this 2½-story brick building (NR 2000) was the work of William L. Brainard (1865-1934), an M. I. T.-educated architect and was built by contractor B. T. Davis. Its site is occupied by the Pleasant Grove Baptist Church, a noncontributing modern metal church building.

It can be argued that religion has played a central role in most neighborhoods, although perhaps none more than African-American neighborhoods such as Paducah's Northside Historic District. Historic churches within the district include the 1950 Mt. Olive (sometimes referred to as "Olivet") Free Will Baptist Church at 1038 Burnett Street. Established long before the construction of the present contributing church building, in 1923, under the heading, NATIONAL CONVENTION NEGRO EVANGELISTS. The *Paducah News Democrat* reported "The National Interdenominational Evangelist Bureau is in session at the Mt. Olive Free Baptist Church, colored [*sic.*], Burnett and Eleventh streets, in this City. A large number of delegates are in attendance covering a territory as far west as South Dakota and as far south as Jacksonville, Fla."<sup>9</sup> The church's parsonage is nearby at 1020 Gardner Avenue.

When the Mt. Olive building was built, its pastor was the Rev. C. J. Moss (1895-1975), both a community leader and a major figure in the African-American heritage of this neighborhood. For 36 years a blacksmith's assistant at the Illinois Central Railroad, Moss received a Bachelor of Divinity degree in 1924. A World War One veteran and a Kentucky Colonel, Moss pastored Baptist churches for 53 years. He was a community activist and advocate for civil rights. As early as 1950 he led a delegation described in the newspaper as "a group of colored persons" to a Planning Commission meeting to advocate for the construction (again quoting from the local newspaper) of a "colored housing project" on N. 12<sup>th</sup> Street between Burnett and Flournoy Streets in the Northside neighborhood. In 1959, well within the Period of Significance of the Northside district, Moss became only the second African-American to file for election as a Commissioner on Paducah City Council.<sup>10</sup> The Rev. Mr. Moss lived on Burnett Street, in the Northside neighborhood; his former house is not extant.

Another leading African-American associated with the Northside Historic District was the Rev. Dr. Wardelle Green Harvey, Sr. (1926-2014). He was born in Boonville, Indiana, but spent much of his adult life in Paducah. He founded and pastored the New Greater Love Missionary Baptist Church at 1249 N. 12<sup>th</sup> Street. In 1968 he became the first African-American to be appointed to the Paducah City Commission; this date marks the end of the Period of Significance of the Northside Historic District. In addition to serving on the Commission, Dr. Harvey, served as Paducah's Mayor Pro Tempore and served on myriad

<sup>8</sup> *Paducah Sun*, August 3, 1971, p. 18.

<sup>9</sup> *Paducah News-Democrat*, August 26, 1921, p. 3.

<sup>10</sup> *Paducah Sun-Democrat*, July 28, 1959, p. 1.

Paducah Northside Historic District

McCracken County, KY  
County and State

Name of Property

community boards, including the Paducah Housing Board.<sup>11</sup> When he died in 2014, his funeral was held in the church that he had founded.<sup>12</sup>

Other African-American churches within the district include the c. 1962 Congregational Holiness Church at 1400 N. 11<sup>th</sup> Street, the Ware Memorial Church of God in Christ at 1145 North 11<sup>th</sup> Street, the 2008 House of Hope at 1731 N. 11<sup>th</sup> Street, the c. 1962 Cornerstone Church at 1400 N. 11<sup>th</sup> Street, and the New Greater Love Missionary Baptist Church at 1249 N. 12<sup>th</sup> Street. Most post-date the Period of Significance and are non-contributing buildings in the context of the district.

The Ohio was both an economic driver and a significant threat to the City. A major flood in the late 1880s reached well into the downtown (Fig. 1). Nearly annual floods reached into the downtown, flooding industrial sectors along the river, and even encroaching northward into residential neighborhoods. (Fig. 1). In 1937, the Ohio River at Paducah rose over its 50-foot flood stage. The flood was considered to be the worst natural disaster in Paducah's history. As a result of the flood, the United States Army Corps of Engineers built a flood wall to replace the earthen levee that had once been in place; the flood wall is north of the nominated area.

The development of the nominated area began late in the nineteenth century, hence the establishment of the Period of Significance beginning c. 1890. *Sanborn Fire Insurance Maps* for the City did not document the neighborhood until the 1920s; most of the area was described as having "no exposure." In her *Architecture of Paducah and McCracken County*, Camille Wells noted that "the economy of Paducah grew rapidly in the 1920s," during which time much of the Northside Historic District was growing as well.<sup>13</sup>

Other significant events in the community's history include the selection of Paducah in 1948 to develop a new Uranium Enrichment Plant and the development of the Museum of the American Quilter's Society (MAQS) in Paducah in 1991, which draws quilters from around the world.

Criterion A

The Paducah Northside Historic District is locally significant and meets National Register Criterion A for *ethnic heritage*, with specific reference to its long association with Paducah's African-American community. It is also locally significant and meets Criterion A for *community planning and development* since it consists of a series of purposefully planned and platted subdivisions (historically referred to as "additions"). The Period of Significance for this Criterion is c. 1890-1968.

Through the decades, multiple additions were made to incorporated Paducah. As illustrated in Fig. 3, The earliest portion of the community dated from 1830 and was located along the south bank of the Ohio River. Other additions radiated northward and occurred in 1833, 1836, 1856, and 1871, followed by one

<sup>11</sup>Paducah Sun, July 13, 2014.

<sup>12</sup>"Harvey, Wardelle G., Sr.," *Notable Kentucky African Americans Database*, accessed November 30, 2021, <https://nkaa.uky.edu/nkaa/items/show/539>.

<sup>13</sup> Camille Wells, *Architecture of Paducah and McCracken County* (Paducah: 1981).



Paducah Northside Historic District

McCracken County, KY  
County and State

Name of Property

in 1897. The Harris, Flournoy, Trimble and Norton's Addition encompassed a substantial tract north of Trimble Avenue.

Additionally, this neighborhood is inextricably linked to the heritage of Paducah's African-American working-class community. Many citizens made their homes here, worshipped here, and were educated here. Historic city directories amply illustrate the diversity of residents in what would become the Northside Historic District. As was the custom of the day, African-American residents were identified by a circled letter "C" for "Colored," after their names; a significant proportion of these designations are found in the Northside street listings within the various directories. For example, the 1939 directory indicated that 22 of the 26 residents of North 10<sup>th</sup> Street between Finley and Burnett Street were so indicated; the same is true throughout the nominated area. In addition, the listed occupations of these individuals, and of others from the neighborhood, were typically menial. M. Hopkins was a laborer for the Paducah Co-op-erage Co.; Elmira House 1109 Burnett Street, Lula Holt, 218 N. 13<sup>th</sup> Street, Rosa Harris, 213 S. 14<sup>th</sup> Street, and Effie Hayes, 516 S. 11<sup>th</sup> Street were all laundresses; Wesley Howard, 1122 Flournoy, was listed simply as a laborer; Effie Hall, 1158 N. 12<sup>th</sup> Street was a helper at the Home Laundry; Nolan C. Horton 1103 Ellis Street, was driver; Hattie Hale, 428 N. 12<sup>th</sup> was a cook; Alvis Futrell, 1018 N. 11<sup>th</sup> Street was a porter at the Elks Home; Edmund Garrett, 1104 Burnett Street, was a porter. And the list goes on.

Representative Census data reported that all residents of Finley Street in 1930 were African-American, indicated as "Neg" under the "Race" column. As previously noted, several African-American churches are located in the district. Rev. George T. Campbell, was pastor of the Mt. Olive Free Will Baptist Church and lived at 1038 Burnett Street.

Criterion C

The Northside Historic District is locally significant with a Period of Significance from c. 1890-1968, and meets National Register Criterion C for *architecture*. The district consists principally of street-after-street of small-scale, vernacular domestic architecture dating from the early 1890s through the middle half of the twentieth century. The architecture of the district includes single-story gable-front houses, gabled ell residences, and Craftsman-style Bungalows, a few gambrel-roofed Dutch Colonial Revival-style houses and Cape Cods, Minimal Traditional and Ranch-style houses, along with several churches and a small number of commercial buildings dating from the early years of the twentieth century. Interspersed with the district's domestic architecture are various dependencies, primarily single-story garages of wood and concrete block construction with both hipped and gable roof forms. One example of Italianate commercial architecture (Photo 1 of 21) is 950 Park Avenue, a 2-story red brick building with a cast iron storefront and a modest metal cornice. Specific examples of representative styles and house types in the Northside Historic District include the following: Craftsman-style houses include 1116 Park Avenue, 1501 and 1511 N. 10<sup>th</sup> Street, 1617 N. 10<sup>th</sup> Street, 1518 N. 10<sup>th</sup> Street, and 1155 N. 12<sup>th</sup> Street; gable-front 1- and 1½-story vernacular houses include 1501, 1524, 1604 and 1605 N. 10<sup>th</sup> Street, 1724 N. 11<sup>th</sup> Street, and 926 and 1605 N. 12<sup>th</sup> Street; Cape Cod houses at 1530 N. 11<sup>th</sup> and 1535 N. 12<sup>th</sup> Street; vernacular gabled ell houses include the properties at 1124 and 1218 Park Avenue, 1005 Grover Street, 1601 N. 11<sup>th</sup> Street, 1723 N. 11<sup>th</sup> Street, and 916, 920, 927, and 1133 N. 12<sup>th</sup> Street.

**Paducah Northside Historic District**

Name of Property

**McCracken County, KY**

County and State

Repetitive house types are found throughout the district. Among these are the single-story side-gable-roofed properties at 1443 and 1447 N. 10<sup>th</sup> Street. Others include four adjacent brick gable-front houses at 1607, 1607, 1623, and 1625, N. 11<sup>th</sup> Street.

Interspersed with these are properties post-dating the Period of Significance, including single-family homes along with 1- and 2-story multi-tenant public housing, such as the adjacent duplexes at 921-923 and 935-937, and 1301-1303 N. 11<sup>th</sup> Street, and single-family homes built by the local Habitat for Humanity, represented by the mirror images houses at 1200 and 1204 Park Avenue.

**Statement of Archaeological Potential**

This district consists entirely of previously-disturbed ground, lacking in potential for archaeological investigation.

---

**9. Major Bibliographical References**

**Bibliography (Cite the books, articles, and other sources used in preparing this form.)**

**Public Records**

Land records, McCracken County Court House, Paducah, Kentucky.

U. S. Census data, various years.

**Internet Sources**

Notable Kentucky African-American database. <https://nkaa.uky.edu/nkaa/items/show/2161>, accessed September 2, 2021

**Published Materials**

Robertson, John E. L. **Paducah: Frontier to the Atomic Age**. Charleston, SC: Arcadia Publishing, 2002.

\_\_\_\_\_. **Paducah: A Pictorial History**. St. Louis: G. Bradley Publishing, 1988.

Wells, Camille. **Architecture of Paducah and McCracken County**. Paducah: Image Graphics, 1981.

**Carons Directories of Paducah, Kentucky**. Louisville: Caron Directory Company, various years.

**Maps**

Sanborn Map Company. *Sanborn Fire Insurance Maps, Paducah, Kentucky*. New York: Sanborn Map Company, various years, up to the 1950 paste-over of the 1906 map.

---

**Previous documentation on file (NPS):**

\_\_\_\_\_ preliminary determination of individual listing (36 CFR 67) has been requested

Paducah Northside Historic District

McCracken County, KY

Name of Property

County and State

- ☐ previously listed in the National Register
- ☐ previously determined eligible by the National Register
- ☐ designated a National Historic Landmark
- ☐ recorded by Historic American Buildings Survey # \_\_\_\_\_
- ☐ recorded by Historic American Engineering Record # \_\_\_\_\_
- ☐ recorded by Historic American Landscape Survey # \_\_\_\_\_

**Primary location of additional data:**

- ☒ State Historic Preservation Office
- ☐ Other State agency
- ☐ Federal agency
- ☐ Local government
- ☐ University
- ☒ Other

Name of repository: City of Paducah Historic Landmarks Commission

**Historic Resources Survey Number (if assigned):** \_\_\_\_\_

---

**10. Geographical Data**

**Acreage of Property** c. 183 ac.

Use either the UTM system or latitude/longitude coordinates

**Latitude/Longitude Coordinates**

Datum if other than WGS84: \_\_\_\_\_

(enter coordinates to 6 decimal places)

- |                            |                          |
|----------------------------|--------------------------|
| 1. Latitude: 37° 05' 25" N | Longitude: 88° 36' 29" W |
| 2. Latitude: 37° 05' 08" N | Longitude: 88° 36' 56" W |
| 3. Latitude: 37° 05' 11" N | Longitude: 88° 36' 56" W |
| 4. Latitude: 37° 05' 27" N | Longitude: 88° 37' 40" W |

**Or**

Paducah Northside Historic District

Name of Property

McCracken County, KY

County and State

**UTM References**

Datum (indicated on USGS map):

☐ NAD 1927 or ☐ NAD 1983

1. Zone:	Easting:	Northing:
2. Zone:	Easting:	Northing:
3. Zone:	Easting:	Northing:
4. Zone:	Easting :	Northing:

**Verbal Boundary Description** (Describe the boundaries of the property.)

This district is bounded on the north by portions on North 10<sup>th</sup> Street, on the south by N. 14<sup>th</sup> Street and Mapelawn Park and Oak Grove Cemeteries, on the west by Palm Street, and on the east by Park Avenue (U. S. Route 60). The district is further accurately depicted on the map downloaded from the website [www.arcgis.com](http://www.arcgis.com), accessed in July 2021 and prepared in association with this document.

**Boundary Justification** (Explain why the boundaries were selected.)

The boundaries of this district incorporate early residential additions and land subdivisions associated with this historic African-American neighborhood. The boundaries integrate contributing elements in this area and are drawn to exclude modern industrial development along N. 10<sup>h</sup> Street specifically.

Paducah Northside Historic District  
Name of Property

McCracken County, KY  
County and State

---

**Form Prepared By**

name/title: David L. Taylor, Historic Preservation Consultant

organization: for the City of Paducah Planning Department

street & number: 19 Cherry Alley

city or town: Brookville state: PA zip code: 15825

e-mail: tta.david@gmail.com

telephone: 814-648-4900

date: January 2022

---

**Additional Documentation**

Submit the following items with the completed form:

- **Maps:** A USGS map or equivalent (7.5 or 15 minute series) indicating the property's location.
- **Sketch map** for historic districts and properties having large acreage or numerous resources. Key all photographs to this map.
- **Additional items:** (Check with the SHPO, TPO, or FPO for any additional items.)

**Photographs**

Submit clear and descriptive photographs. The size of each image must be 1600x1200 pixels (minimum), 3000x2000 preferred, at 300 ppi (pixels per inch) or larger. Key all photographs to the sketch map. Each photograph must be numbered and that number must correspond to the photograph number on the photo log. For simplicity, the name of the photographer, photo date, etc. may be listed once on the photograph log and doesn't need to be labeled on every photograph.

**Paducah Northside Historic District**

Name of Property

**McCracken County, KY**  
County and State

**Figure Log**

Fig. 1 View of a section of downtown Paducah during the 1884 flood.

Fig. 2 Demolition of Whittier School, c. 1969

Fig 3. Map of Paducah illustrating early additions

**Photo Log**

Name of Property: Paducah Northside Historic District

City or Vicinity: Paducah

County: McCracken

State: KY

Photographer: David L. Taylor

Date Photographed: March 2021

Description of Photograph(s) and number, include description of view indicating direction of camera:

Photo 1 of 21: Commercial building at 950 Park Avenue, looking southeast

Photo 2 of 21: Craftsman-style house at 1116 Park Avenue, looking southeast

Photo 3 of 21: Gabled ell at 1124 Park Avenue, looking southeast. This house type is found widely in this district.

Photo 4 of 21: Repetitive house types, gable-front cottages of brick, 1603, 1609, 1623 N. 11<sup>th</sup> Street, looking northwest

Photo 5 of 21: Colonial Revival-style Cape Cod house with rear garage, 1530 N. 11<sup>th</sup> Street, looking northeast

Photo 6 of 21: Ruins of Northside School, looking northeast

Photo 7 of 21: Craftsman-style Bungalow at 1155 N. 12 Street, looking southwest

Photo 9 of 21 Adjacent Craftsman-style Bungalows, 1600 and 1606 N. 12<sup>th</sup> Street, looking southwest

Photo 8 of 21: Craftsman-style Bungalow, 1209 N. 12<sup>th</sup> Street, looking southwest

Photo 9 of 21: Adjacent Craftsman-style Bungalows, 1600 and 1606 N. 12<sup>th</sup> Street, looking southwest

Photo 10 of 21: Dutch Colonial Revival-style house, 1623 N. 12th Street, looking southwest

Paducah Northside Historic District

Name of Property

McCracken County, KY

County and State

Photo 11 of 21: Vernacular front-gable house, 1705 N. 12<sup>th</sup> Street, looking south, characteristic of many others in the district

Photo 12 of 21: 1742 N. 12<sup>th</sup> Street, looking south, distinctive for its size, brick construction, and massing

Photo 13 of 21: Adjacent houses at 1630 and 1628 N. 12<sup>th</sup> Street, looking northeast

Photo 14 of 21: Minimal Traditional-style house at 1324 N. 12<sup>th</sup> Street, characteristic of many others dating from the middle years of the twentieth century, looking southwest

Photo 15 of 21: Gable-front 1-story house with bracketed eaves at 926 N. 12<sup>th</sup> Street, looking northeast

Photo 16 of 21: House at 1115 N. 13<sup>th</sup> Street, with distinctive jerkinhead gable roof, looking southeast

Photo 17 of 21: Mt. Olive Free Will Baptist Church, looking southeast, one of several churches associated with this African-American neighborhood

Photo 18 of 21: Gable-front cottages at 1104 and 1106 Greer Street, looking east; such properties are found throughout the Northside Historic District

Photo 19 of 21: 1029 Ellis Street, looking east; a Craftsman-style house with brackets under the eaves and battered porch supports resting on brick piers.

Photo 20 of 21: Repetitive brick house types at N. 11<sup>th</sup> and Olive Streets, looking southeast; right to left, 1625, 1623, 1609, and 1607 N. 11<sup>th</sup> Street.

Paducah Northside Historic District  
Name of Property

McCracken County, KY  
County and State



Photo 1 of 21: Commercial Building, 950 Park Avenue, MCPN-1522; Resource No. 1), looking southeast



**Paducah Northside Historic District**  
Name of Property

**McCracken County, KY**  
County and State



Photo 2 of 21: Craftsman-style house at 1116 Park Avenue (MCPN-1531; Resource No. 15), looking south-east

Paducah Northside Historic District  
Name of Property

McCracken County, KY  
County and State



Photo 3 of 21: Gabled ell at 1124 Park Avenue MCPN-1533; Resource No. 17), looking southeast. This house type is found widely in this district.



Paducah Northside Historic District

Name of Property

McCracken County, KY

County and State



Photo 4 of 21: Repetitive house types, gable-front cottages of brick, 1607, 1609, and 1623 N. 11<sup>th</sup> Street (MCPN-1668, 1669, and 1670; Resource Nos. 146, 149, and 150, respectively), looking northwest

**Paducah Northside Historic District**  
Name of Property

**McCracken County, KY**  
County and State



Photo 5 of 21: Colonial Revival-style Cape Cod house with rear garage, 1530 N. 11<sup>th</sup> Street (MCPN-1685; Resource No. 140), looking northeast



Paducah Northside Historic District  
Name of Property

McCracken County, KY  
County and State



Photo 6 of 21: Ruins of Northside School, a non-contributing structure, 1040 Flournoy Street (MCPN-xxx; Resource No. 352) looking northeast

Paducah Northside Historic District  
Name of Property

McCracken County, KY  
County and State



Photo 7 of 21: Craftsman-style Bungalow at 1155 N. 12th Street (MCPN-1713; Resource No. 183), looking southwest

Paducah Northside Historic District  
Name of Property

McCracken County, KY  
County and State



Photo 8 of 21: Craftsman-style Bungalow, 1209 N. 12<sup>th</sup> Street (MCPN-1717; Resource No. 193), looking southwest



Paducah Northside Historic District  
Name of Property

McCracken County, KY  
County and State



Photo 9 of 21: Adjacent Craftsman-style Bungalows, 1600 and 1606 N. 12<sup>th</sup> Street (MCPN-1727 & MCPN-1728; Resource Nos. 232 & 236, looking southwest



Paducah Northside Historic District  
Name of Property

McCracken County, KY  
County and State



Photo 10 of 21: Dutch Colonial Revival-style house, 1623 N. 12th Street (MCPN-131; Resource No. 239), looking southwest

Paducah Northside Historic District  
Name of Property

McCracken County, KY  
County and State



Photo 11 of 21: Vernacular front-gable house, 1705 N. 12<sup>th</sup> Street (MCPN-1734; Resource No. 245), looking south, characteristic of many others in the district

Paducah Northside Historic District  
Name of Property

McCracken County, KY  
County and State



Photo 12 of 21: 1742 N. 12<sup>th</sup> Street (MCPN-1727; Resource No. 252), looking south, distinctive for its size, brick construction, and massing



**Paducah Northside Historic District**

**Name of Property**

**McCracken County, KY**  
**County and State**



Photo 13 of 21: Adjacent houses at 1630 and 1628 N. 12th Street (MCPN-1743 and MCPN-1938; Resource Nos. 242 and 241), looking northeast

**Paducah Northside Historic District**

**McCracken County, KY**

**Name of Property**

**County and State**



Photo 14 of 21: Minimal Traditional-style house at 1324 N. 12<sup>th</sup> Street (MCPN-1759; Resource No. 215), looking southwest, characteristic of many others dating from the middle years of the twentieth century



Paducah Northside Historic District  
Name of Property

McCracken County, KY  
County and State



Photo 15 of 21: Gable-front 1-story house with bracketed eaves at 926 N. 12<sup>th</sup> Street (MCPN-1783; Resource No.164), looking northeast

Paducah Northside Historic District

Name of Property

McCracken County, KY  
County and State



Photo 16 of 21: House at 1115 N. 13<sup>th</sup> Street (MCPN-1792; Resource No. 257), with distinctive jerkinhead gable roof, looking southeast



Paducah Northside Historic District  
Name of Property

McCracken County, KY  
County and State



Photo 17 of 21: Mt. Olive Free Will Baptist Church, 1038 Burnett Street (MCPN-1865; Resource No. 327), looking southeast, one of several churches associated with this African-American neighborhood



Paducah Northside Historic District

Name of Property

McCracken County, KY  
County and State



Photo 18 of 21: Gable-front cottages at 1104 and 1106 Greer Street (MCPN-1896 and MCPN 1895; Resource Nos. 359, 360), looking east; such properties are found throughout the Northside Historic District

Paducah Northside Historic District  
Name of Property

McCracken County, KY  
County and State



Photo 19 of 21: 1029 Ellis Street, looking west, a Craftsman-style house with brackets under the eaves and battered porch supports resting on brick piers.



**Paducah Northside Historic District**  
Name of Property

**McCracken County, KY**  
County and State



Photo 20 of 21: Repetitive brick house types at N. 11<sup>th</sup> and Olive Streets, right to left, 1625, 1623, 1609, and 1607 N. 11<sup>th</sup> Street (MCNP-1671, 1670, 1669, and 1668); Resource Nos. 150, 149, 146, 145), looking southeast.

Paducah Northside Historic District  
Name of Property

McCracken County, KY  
County and State



Photo 21 of 21: Streetscape, Park Avenue, looking south, with 1100 Park Avenue (MCNP-1528; Resource No. 12) in the foreground.



Paducah Northside Historic District  
Name of Property

McCracken County, KY  
County and State

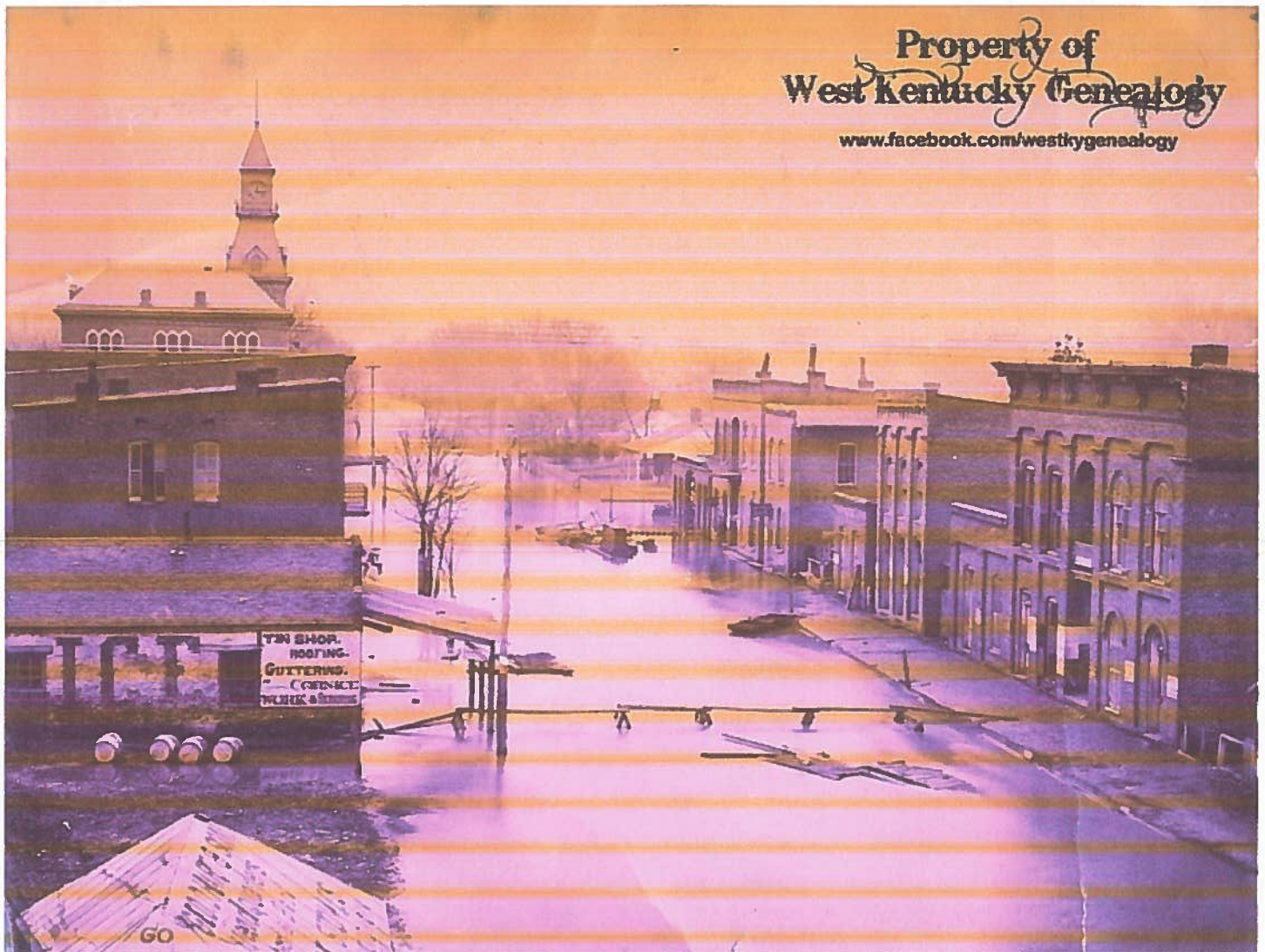


Fig. 1: View of a portion of downtown Paducah during the flood of 1884.

Paducah Northside Historic District  
Name of Property

McCracken County, KY  
County and State



Fig. 2: Whittier School (1907), formerly in the Northside Historic District, during demolition c. 1969. The Whittier Apartments now occupy this site.



Paducah Northside Historic District  
Name of Property

McCracken County, KY  
County and State

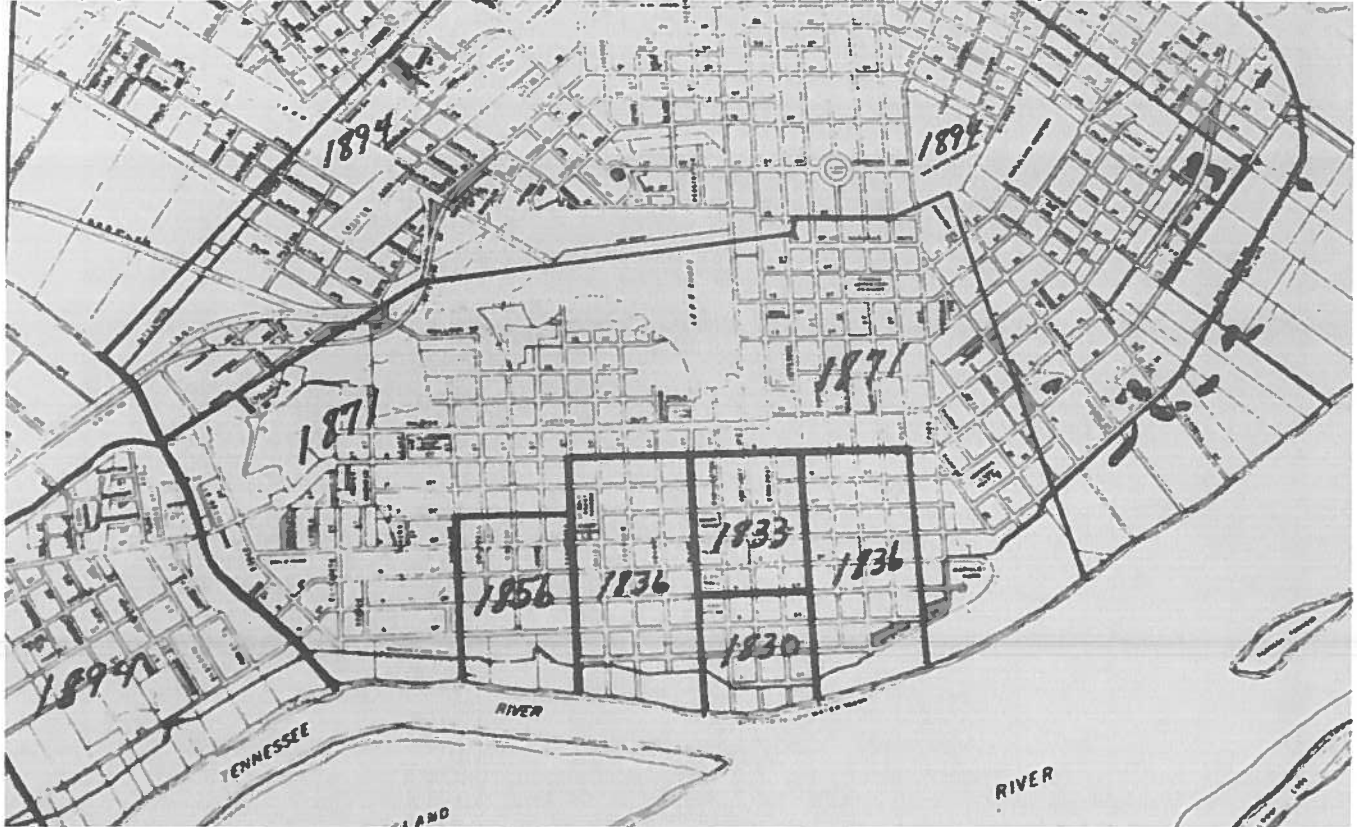


Fig. 3: This map illustrates several early additions to the City of Paducah. [From *Pictorial History of Paducah*]

**Paperwork Reduction Act Statement:** This information is being collected for nominations to the National Register of Historic Places to nominate properties for listing or determine eligibility for listing, to list properties, and to amend existing listings. Response to this request is required to obtain a benefit in accordance with the National Historic Preservation Act, as amended (16 U.S.C.460 et seq.). We may not conduct or sponsor and you are not required to respond to a collection of information unless it displays a currently valid OMB control number.

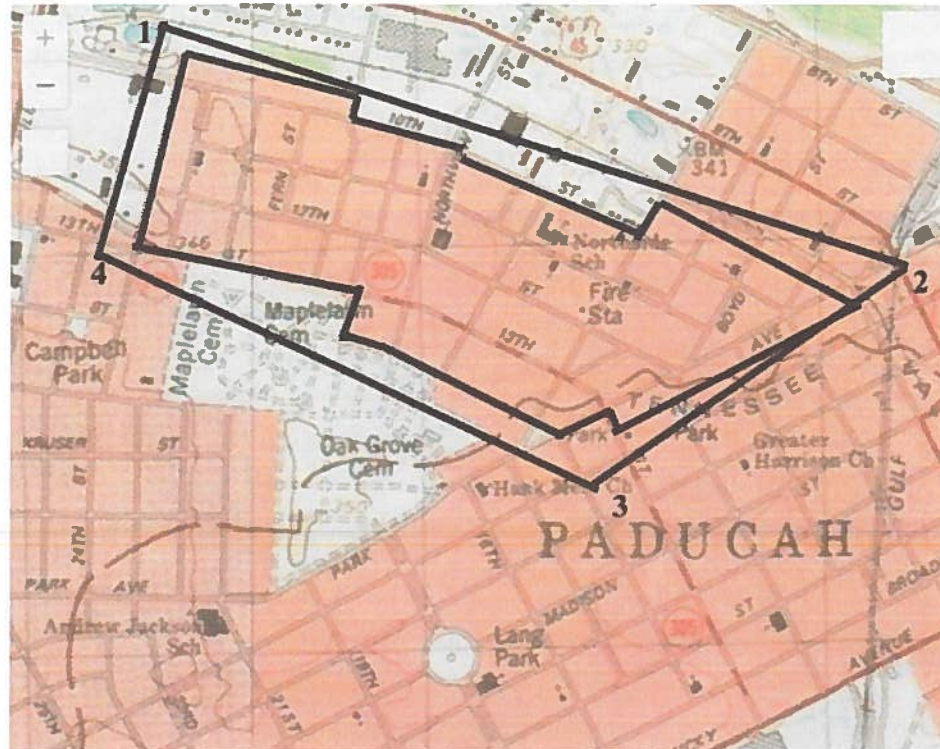
**Estimated Burden Statement:** Public reporting burden for each response using this form is estimated to be between the Tier 1 and Tier 4 levels with the estimate of the time for each tier as follows:

- Tier 1 – 60-100 hours
- Tier 2 – 120 hours
- Tier 3 – 230 hours
- Tier 4 – 280 hours

The above estimates include time for reviewing instructions, gathering and maintaining data, and preparing and transmitting nominations. Send comments regarding these estimates or any other aspect of the requirement(s) to the Service Information Collection Clearance Officer, National Park Service, 1201 Oakridge Drive Fort Collins, CO 80525.

Paducah Northside Historic District  
Name of Property

McCracken County, KY  
County and State

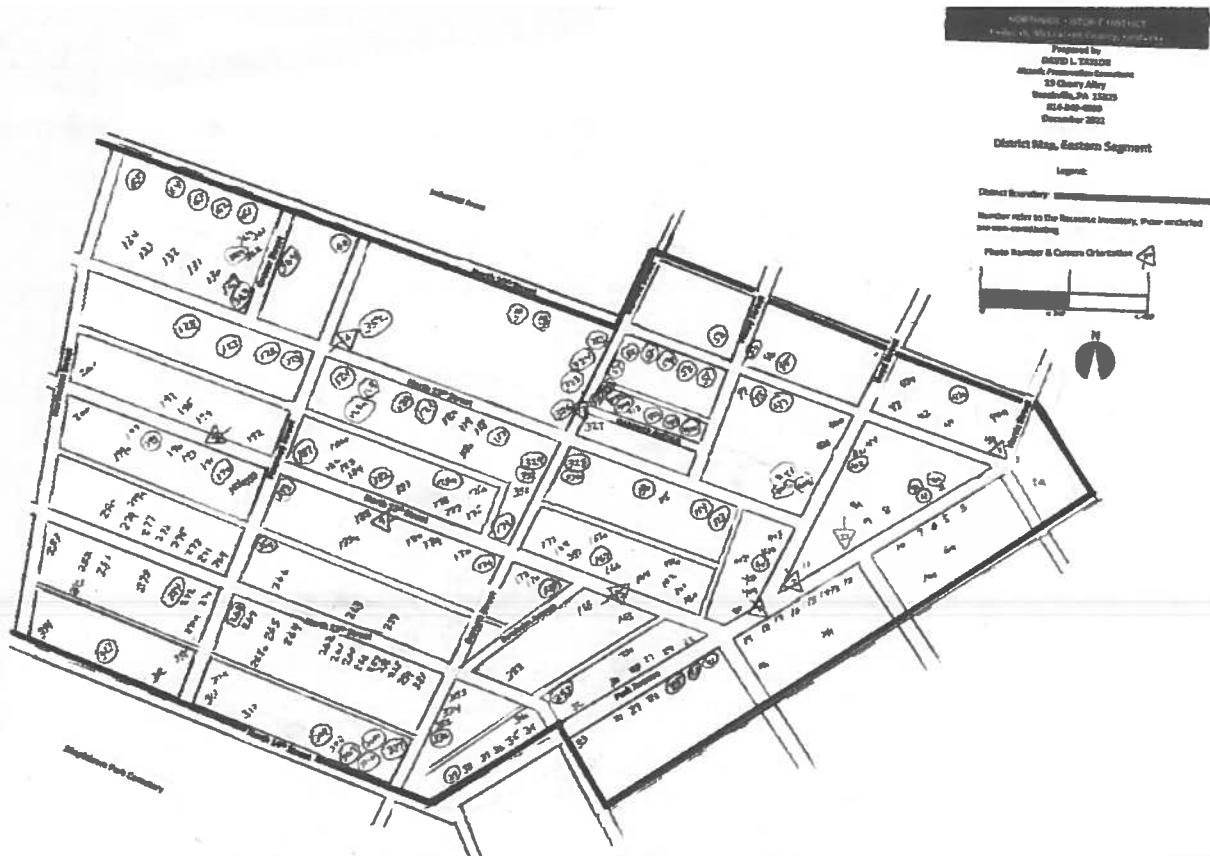


**Paducah Northside Historic District**  
**[from USGS 7½-minute topographical quadrangle map of Paducah West, KY]**



Paducah Northside Historic District  
Name of Property

McCracken County, KY  
County and State



Paducah Northside Historic District  
Name of Property

McCracken County, KY  
County and State

**NORTHSIDE HISTORIC DISTRICT**  
Paducah, McCracken County, Kentucky

Prepared by  
**DAVID L. TAYLOR**  
Historic Preservation Consultant  
25 Cherry Alley  
Brownsville, PA 15205  
814-659-4000  
December 2022

**District Map, Western Segment**

Legend

District Boundary

Number refers to the Resource Inventory; those circled are non-contributing

Photo Number & Camera Orientation

