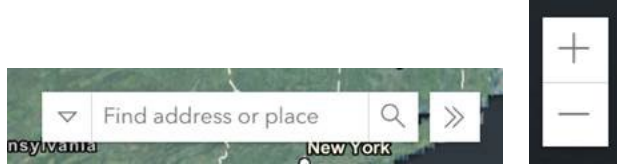

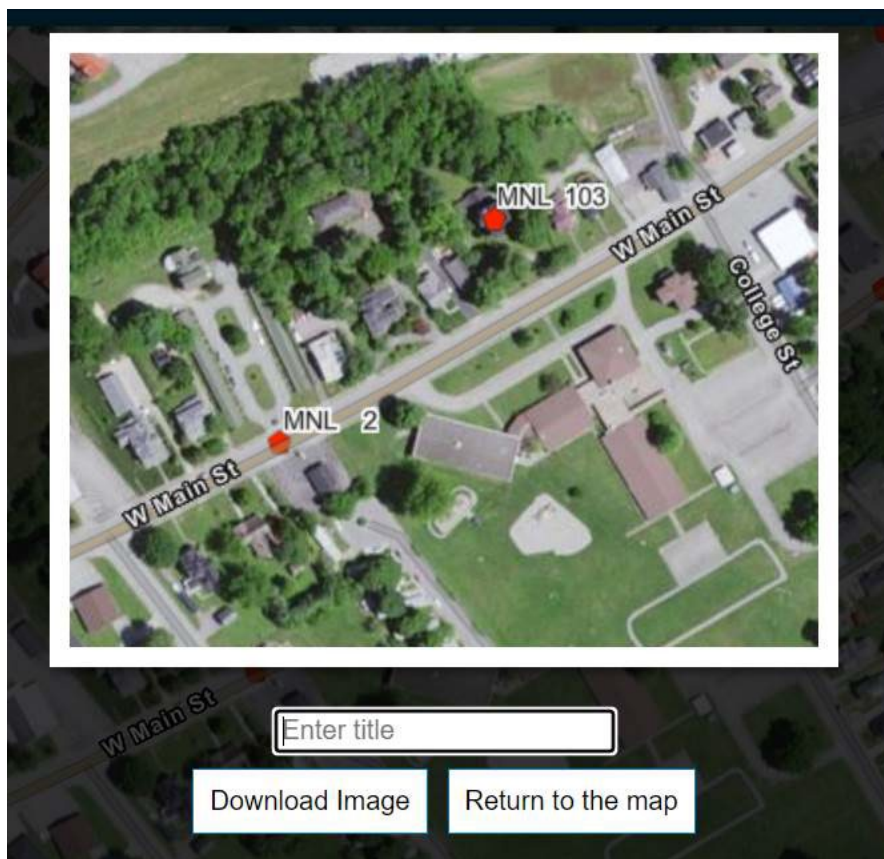



Preliminary Site Check Instructions

1. Visit the [KHC Cultural Resource web portal](#)
2. Use the Search bar or Zoom features to locate the project area by address or coordinates.

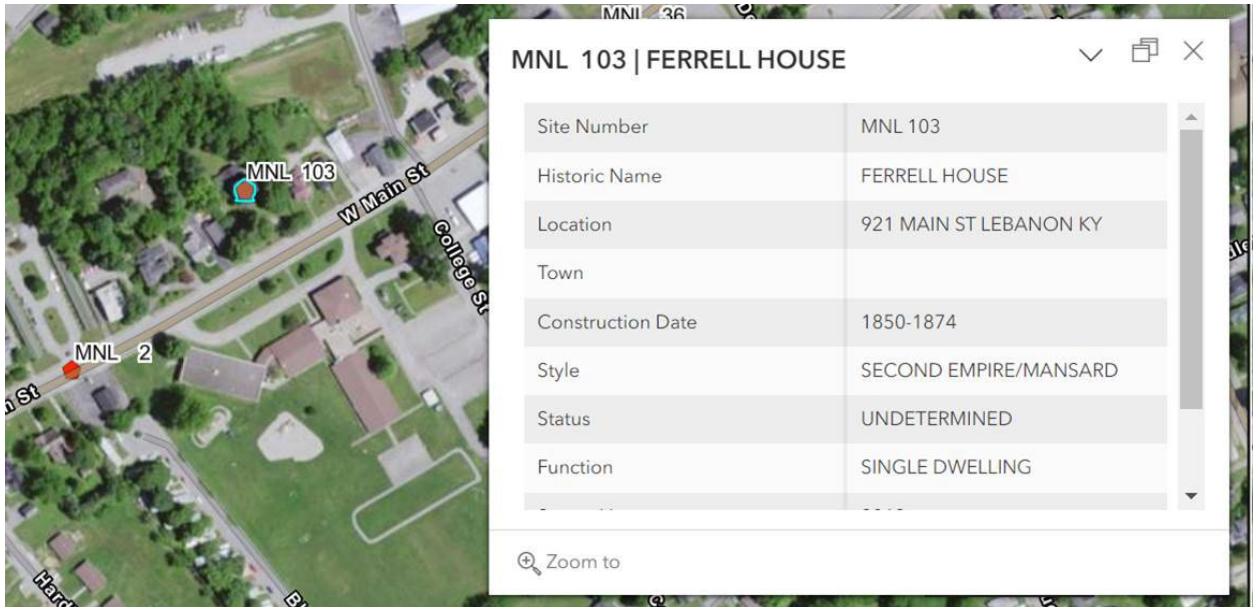


3. Once you have located your project area, select the image  button on the left toolbar to take one or more screenshots of your project area. Please include your direct project area and surrounding parcels. If your project is large (5+ km) or linear, you may require multiple screenshots to show the resources in your area.



4. After downloading your image, get information about the resources in your project area by clicking on the resource icon . Screenshot or copy the resource information.

Preliminary Site Check Instructions



5. Please include information from step #3 and #4 with your Section 106 Submission.